



直交軸減速馬達
Right angle type gear motor



交流馬達型號之選定
The selection for AC motor and gear

型號選定 ——— P.2

25/30W ——— P.3~P.5

200/250W ——— P.17

40W ——— P.6~P.8

370W ——— P.18~P.21

60W ——— P.9~P.11

400W ——— P.22~P.23

90/120W ——— P.12~P.14

750W ——— P.24~P.25

120/140W ——— P.15

1500W ——— P.26~P.27

160/180W ——— P.16

接線盒種類選定 ——— P.28

4 **R** **K** **25** **GN** — **A** **■**

外型尺寸
Overall Dimensions
4:80mm
5:90mm
6:100mm
8:145mm

機種
Kinds
I:感應式
R:可逆式

馬達系列
Motor Series
I: Inductive
R: Reversible
K系列
K Series

出力
Output Force
25=25W
30=30W
40=40W
60=60W
90=90W
120=120W
140=140W
160=160W
180=180W
200=200W
250=250W
370=370W
400=400W
750=750W
1500=1500W

馬達軸形狀
Motor Axis Shape
GN螺旋齒軸
(25W~40W馬達)
GN Spiral Toothed Axis
(25W~40W motor)
GU螺旋齒軸
(60W~250W馬達)
GU Spiral Toothed Axis
(60W~250W motor)

電壓極數
Voltage Poles
A:1Φ110V (4P)
B:1Φ110V (2P)
C:1Φ220V (4P)
D:1Φ220V (2P)
S:3Φ220V (4P)
U:3Φ380V (4P)
U1:3Φ400V
U2:3Φ415V
U3:3Φ440V
U4:3Φ460V
U5:3Φ480V
S/U:3Φ220/380V
S/U4:3Φ230/460V

其它附件
Other Accessories
F:風扇
F: Fan
M:電磁煞車
M: Electromagnetic Brake
T:接線盒
T: Terminal Box
P:溫度開關
P: Temperature Switch

馬達軸形狀前加R為調速馬達
Plus "R" before the axis shape of the motor stands for the speed regulation motor

齒輪型號之選定
The selection for AC motor

4 **GU** **100** **RC** **K**

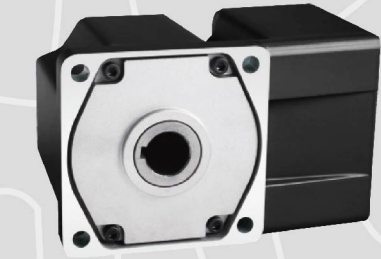
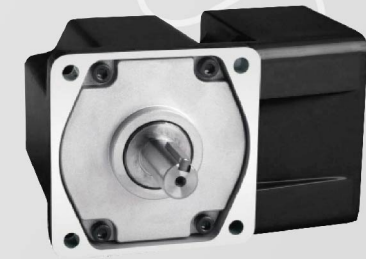
外型尺寸
Overall Dimensions
4:80mm
5:90mm
6:100mm
8:145mm

出力軸種類
Type of output shaft
GN:出力軸 ≤ φ12
GU:出力軸 ≥ φ15

減速比
Speed Reducing Ratio

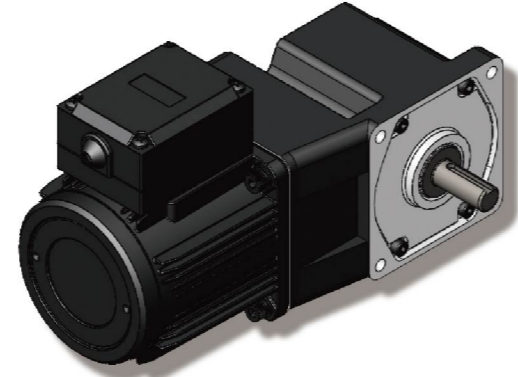
出力軸種類
Type of output shaft
RC:中空軸
RC:Hollow shaft
RT:中實軸
RT:In the real axis

齒輪軸承種類
Kinds of Gear Bearings
K=滾珠培林軸承
K= Ball Bearing



25/30W

80mm



電機特性

List of motor characteristics

電機型號 Motor model	規格 Specs	輸出功率 Output Power W	電源電壓 Voltage V	頻率 Frequency Hz	電流 Current A	起動扭矩 Starting Torque		額定扭矩 Rated Torque		額定轉速 Rated Revolution r/min	電容量/耐壓 Capacity/ve µ F/VAC
						mN.m	gf.cm	mN.m	gf.cm		
4IK25GN-C 4IK25A-C	感應 Induction	25	單相 1-phase 220	50	0.22	231	2310	185	1850	1250	1.5/450
				60	0.21	192	1920	154	1540	1650	1.5/450
4RK25GN-C 4RK25A-C	可逆 Reversible	25	單相 1-phase 220	50	0.24	231	2310	185	1850	1250	2/450
				60	0.26	192	1920	154	1540	1650	2/450
4IK25GN-A 4IK25A-A	感應 Induction	25	單相 1-phase 110	50	0.48	231	2310	185	1850	1250	6/250
				60	0.46	192	1920	154	1540	1650	6/250
4RK25GN-A 4RK25A-A	可逆 Reversible	25	單相 1-phase 110	50	0.50	231	2310	185	1850	1250	8/250
				60	0.56	192	1920	154	1540	1650	8/250
4IK25GN-U 4IK25A-U	—	25	三相 3-phase 380	50	0.14	231	2310	185	1850	1250	—
				60	0.12	192	1920	154	1540	1650	—
4RK25GN-S 4RK25A-S	—	25	三相 3-phase 220	50	0.24	231	2310	185	1850	1250	—
				60	0.225	192	1920	154	1540	1650	—
4IK30GN-C 4IK30A-C	感應 Induction	30	單相 1-phase 220	50	0.28	275	2750	220	2200	1250	2.2/450
				60	0.3	231	2310	185	1850	1650	2.2/450
4RK30GN-C 4RK30A-C	可逆 Reversible	30	單相 1-phase 220	50	0.3	275	2750	220	2200	1250	2.5/450
				60	0.32	231	2310	185	1850	1650	2.5/450
4IK30GN-A 4IK30A-A	感應 Induction	30	單相 1-phase 110	50	0.58	275	2750	220	2200	1250	8/250
				60	0.60	231	2310	185	1850	1650	8/250
4RK30GN-A 4RK30A-A	可逆 Reversible	30	單相 1-phase 110	50	0.60	275	2750	220	2200	1250	10/250
				60	0.65	231	2310	185	1850	1650	10/250

- 上表參數是指電機單獨，不附加任何負荷裝置。
- 電機額定轉速、額定電流允許在±5%範圍內變動。

- Parameters in above table refer to motor alone, without any load device.
- Permissible change in rated speed and rated current of the motor is within the range of ±5%.

減速電機允許負載

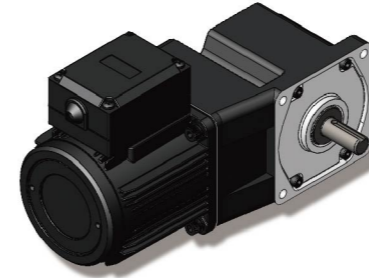
Allowable load for the gear motor

減速參數 Geared-down parameter	同步轉速r/min Synchronous speed	減速比i ratio																			
		500	300	200	150	120	100	83	60	50	40	35	30	25	20	15	12	10	8	5	4.2
最大允許負載 Max allowable load	25W	kg.cm 0.45	7.9 0.79	12 1.18	15.7 1.55	19 1.86	23 2.25	28.4 2.78	35 3.43	42 4.12	51.1 5.01	56.7 5.57	62 6.18	76.6 7.52							80 7.84
	30W	kg.cm 0.56	8.1 0.8	14.2 1.39	18.9 1.85	23.6 2.32	28.3 2.78	34 3.34	42.5 4.17	51.1 5.01	60.2 6.01	68.1 6.68	65.7 6.5							80 7.84	

- 轉速是以電動機的同步轉速為基準除以減速比而算出的數值。實際轉速將隨負載大小變化而比所示數值減少2~15%左右。
- 希望以大於上表的減速比進一步減速時，可在電動機與減速機之間安裝減速比為10的中間減速機。
- 當負載扭矩超過減速機最大允許負載扭矩，並有堵轉情況存在時，請在減速箱輸出軸和負載連接處加裝扭矩限制裝置，確保齒輪減速箱正常運行。
- The speed is based on the synchronous motor speed reduction ratio as a benchmark calculated by dividing the value of. Actual speed will vary the size of the load changes in less than the values shown in 2~15%.
- Hope to the table of the reduction ratio is greater than the further reduction, it would be installed between the motor and the reducer reduction ratio of 10 the middle of the reducer.
- When the load torque exceeds the maximum allowable load torque gear motor, and a locked rotor situation exists, please slow down box at the junction of the output shaft and load torque limit device installed to ensure the normal operation gearbox.

直角中實減速箱

Right angle solid-shaft reduction gear box

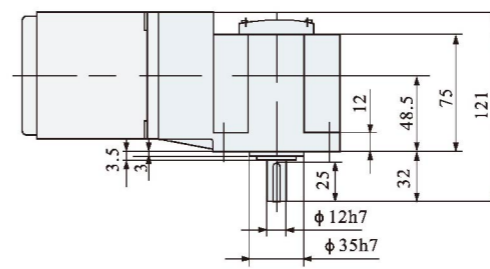
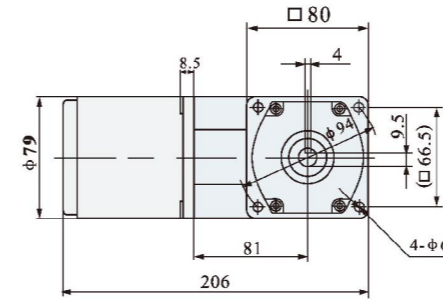


型號:4GN □RT-K Model:4GN □RT-K
減速比:1:3~360 Gear ratio:1:3~360

80型 CAD 尺寸 Model 80 CAD size

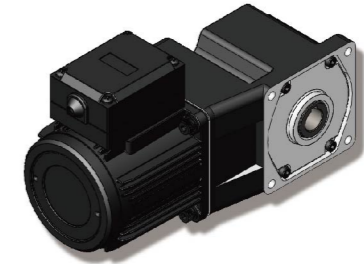
組合:定速電機+直角中實減速箱
減速比:1:3~360

Combination: fixed speed motor + right angle solid reduction gear box
Deceleration ratio: 1:3~360



直角中空減速箱

Right angle hollow-shaft reduction gear box

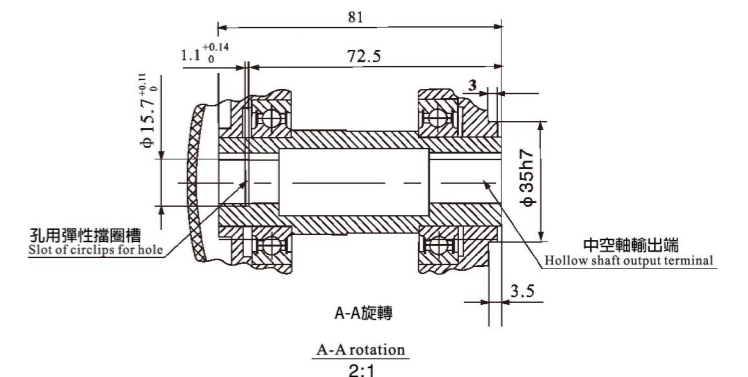
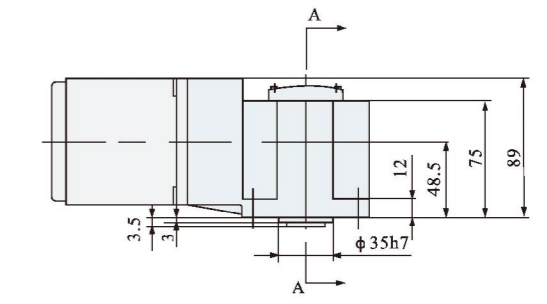
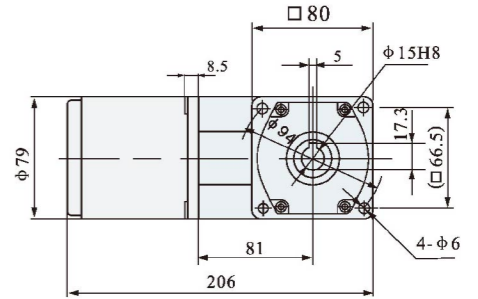


型號:4GN □RC-K Model:4GN □RC-K
減速比:1:3~360 Gear ratio:1:3~360

80型 CAD 尺寸 Model 80 CAD size

組合:定速電機+直角中空減速箱
減速比:1:3~360

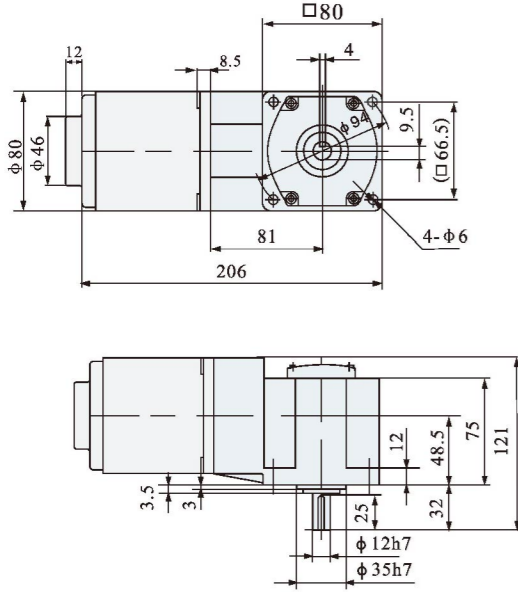
Combination: fixed speed motor + right angle hollow reduction gear box
Deceleration ratio: 1:3~360



80型 CAD 尺寸
Model 80 CAD size

組合：調速電機+直角中實減速箱
減速比：1:3~360

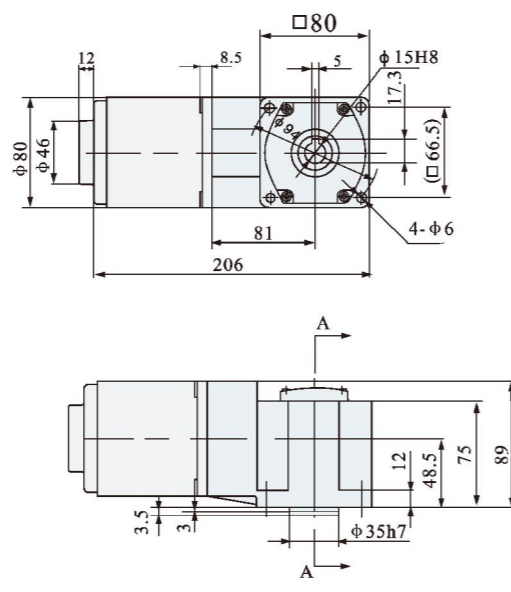
Combination: adjustable speed motor + right angle solid reduction gear box
Deceleration ratio: 1:3~360



80型 CAD 尺寸
Model 80 CAD size

組合：調速電機+直角中空減速箱
減速比：1:3~360

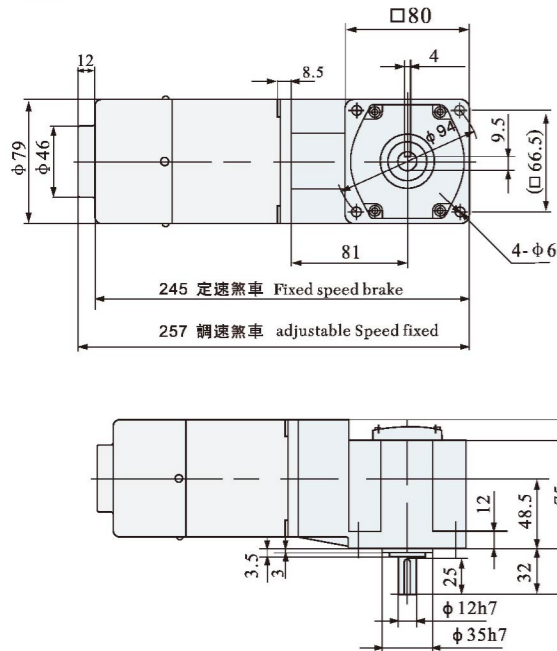
Combination: adjustable speed motor + right angle hollow deceleration gear box
Deceleration ratio: 1:3~360



80型 CAD 尺寸
Model 80 CAD size

組合：煞車定速/調速電機+直角中實減速箱
減速比：1:3~360

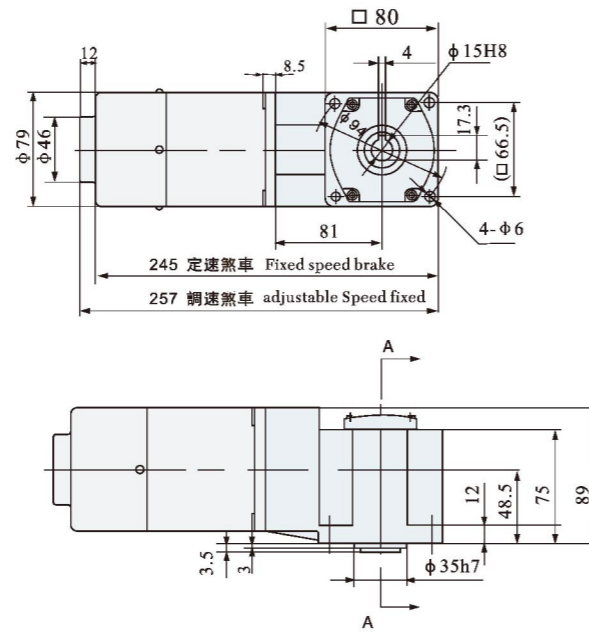
Combination: fixed speed / adjustable speed brake motor + right angle solid deceleration gear box
Deceleration ratio: 1:3~360



80型 CAD 尺寸
Model 80 CAD size

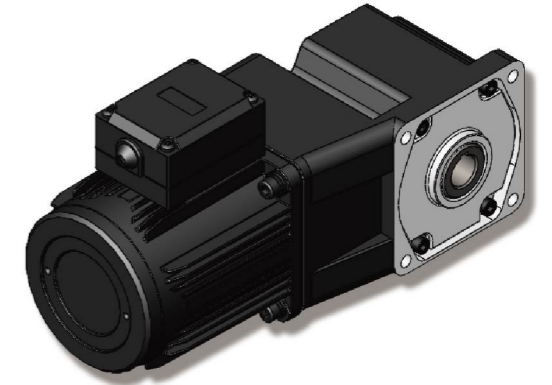
組合：煞車定速/調速電機+直角中空減速箱
減速比：1:3~360

Combination: fixed speed / adjustable speed brake motor + right angle hollow deceleration gear box
Deceleration ratio: 1:3~360



40W

90mm



電機特性

List of motor characteristics

電機型號 Motor model	規格 Specs	輸出功率 Output Power W	電源電壓 Voltage V	頻率 Frequency Hz	電流 Current A	起動扭矩 Starting Torque		額定扭矩 Rated Torque		額定轉速 Rated Revolution r/min	電容量/耐壓 Capacity/Ve μF/VAC
						mN.m	gf.cm	mN.m	gf.cm		
5IK40GN-C 5IK40A-C	感應 Induction	40	單相 1-phase 220	50	0.35	367	3670	294	2940	1300	2.5/450
				60	0.33	307	3070	246	2460	1650	2.5/450
5RK40GN-C 5RK40A-C	可逆 Reversible	40	單相 1-phase 110	50	0.38	367	3670	294	2940	1300	3.0/450
				60	0.4	307	3070	246	2460	1650	3.0/450
5IK40GN-A 5IK40A-A	感應 Induction	40	單相 1-phase 110	50	0.70	367	3670	294	2940	1300	10/250
				60	0.72	307	3070	246	2460	1650	10/250
5RK40GN-A 5RK40A-A	可逆 Reversible	40	單相 1-phase 110	50	0.76	367	3670	294	2940	1300	12/250
				60	0.80	307	3070	246	2460	1650	12/250
5IK40GN-U 5IK40A-U	—	40	三相 3-phase 380	50	0.24	367	3670	294	2940	1300	—
				60	0.22	307	3070	246	2460	1650	—
5RK40GN-S 5RK40A-S	—	40	三相 3-phase 220	50	0.42	367	3670	294	2940	1300	—
				60	0.38	307	3070	246	2460	1650	—

● 上表參數是指電機單體，不附加任何負荷裝置。
● 電機額定轉速、額定電流允許在±5%範圍內變動。

● Parameters in above table refer to motor alone, without any load device.
● Permissible change in rated speed and rated current of the motor is within the range of ±5%.

減速電機允許負載

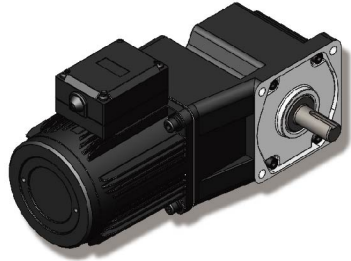
Allowable load for the gear motor

減速參數 Geared-down parameter	同步轉速r/min Synchronous speed	500	300	200	150	120	100	83	75	60	50	40	35	30	25	20	16.7	15	12	10	8	5	3.3			
		減速比 ratio																								
最大允許負載 Max allowable load	40W	kg.cm	7.3	12	18	24.2	30	36	39.7	43.6	55	65.5	78	87	98								100			
			N.m	0.72	1.18	1.77	2.4	2.94	3.53	3.90	4.28	5.0	6.24	7.7	8.57	9.64								9.81		

● 轉速是以電動機的同步轉速為基準除以減速比而算出的數值。實際轉速將隨負載大小變化而比所示數值減少2~15%左右。
● 希望以大於上表的減速比進一步減速時，可在電動機與減速機之間安裝減速比為10的中間減速機。
● 當負載扭矩超過減速機最大允許負載扭矩，並有堵轉情況存在時，請在減速箱輸出軸和負載連接處加裝扭矩限制裝置，確保齒輪減速箱正常運行。
● The speed is based on the synchronous motor speed reduction ratio as a benchmark calculated by dividing the value of. Actual speed will vary the size of the load changes in less than the values shown in 2~15%.
● Hope to the table of the reduction ratio is greater than the further reduction, it would be installed between the motor and the reducer reduction ratio of 10 the middle of the reducer.
● When the load torque exceeds the maximum allowable load torque gear motor, and a locked rotor situation exists, please slow down box at the junction of the output shaft and load torque limit device installed to ensure the normal operation gearbox.

直角中實減速箱

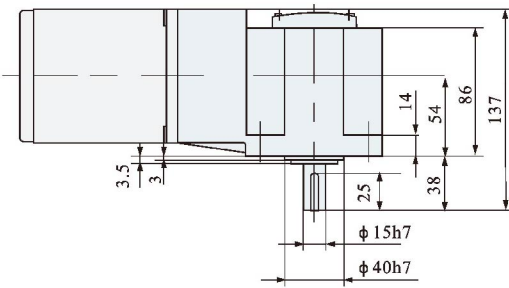
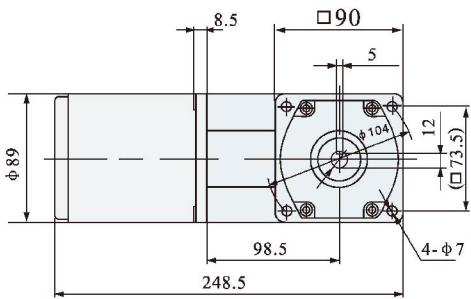
Right angle solid-shaft reduction gear box



型號:5GU□RT-K Model:5GU □RT-K
減速比:1:3~450 Gear ratio : 1:3~450

90型 CAD 尺寸
Model 90 CAD size

組合:定速電機+直角中實減速箱
減速比:1:3~450
Combination: fixed speed motor + right angle solid reduction gear box
Deceleration ratio: 1:3~450



直角中空減速箱

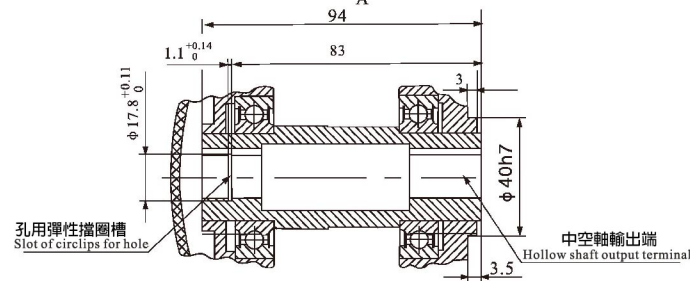
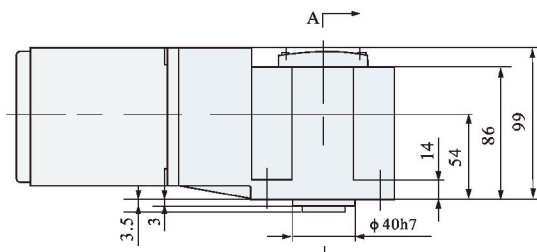
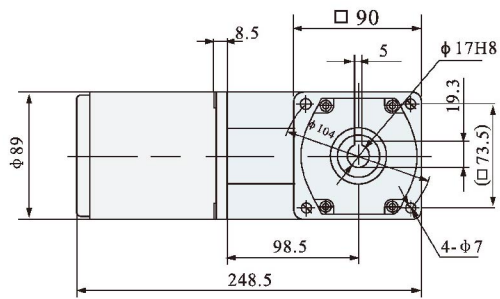
Right angle hollow-shaft reduction gear box



型號:5GU□RC-K Model:5GU □RC-K
減速比:1:3~450 Gear ratio : 1:3~450

90型 CAD 尺寸
Model 90 CAD size

組合:定速電機+直角中空減速箱
減速比:1:3~450
Combination: fixed speed motor + right angle hollow reduction gear box
Deceleration ratio: 1:3~450

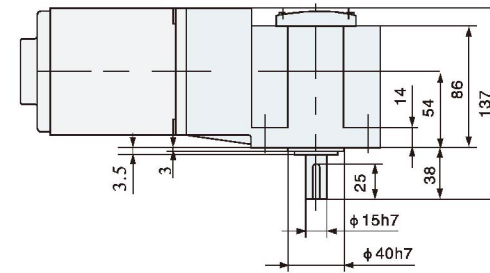
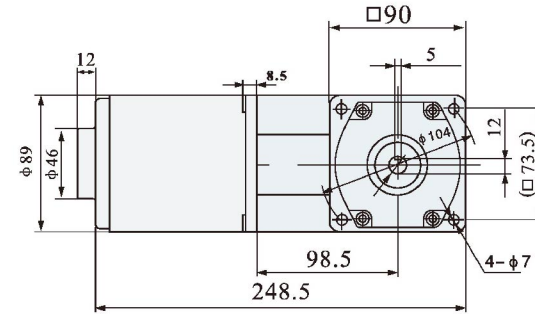


孔用彈性擋圈槽 Slot of circlips for hole
中空軸輸出端 Hollow shaft output terminal

A-A旋轉
A-A rotation
2:1

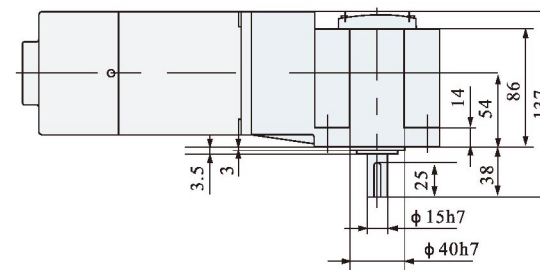
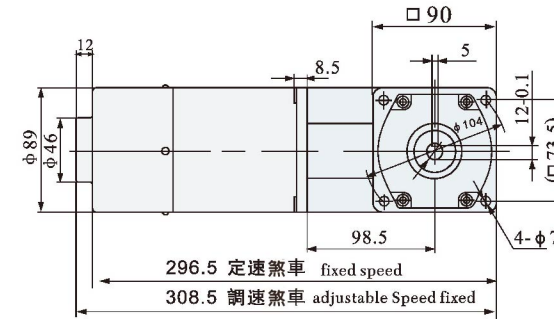
90型 CAD 尺寸
Model 90 CAD size

組合:調速電機+直角中實減速箱
減速比:1:3~450
Combination: adjustable speed motor + right angle solid reduction gear box
Deceleration ratio:1:3~450



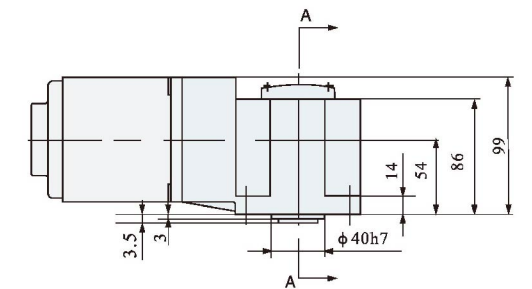
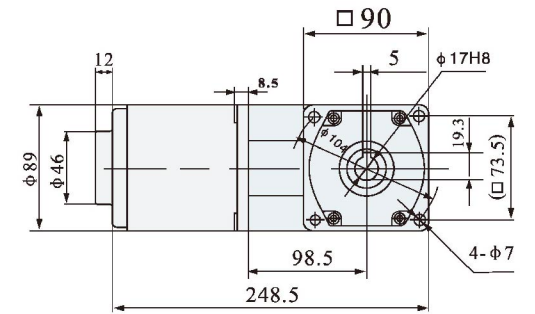
90型 CAD 尺寸
Model 90 CAD size

組合:煞車定速/調速電機+直角中實減速箱
減速比:1:3~450
Combination: fixed speed / adjustable speed brake motor + right angle solid deceleration gear box
Deceleration ratio: 1:3~450



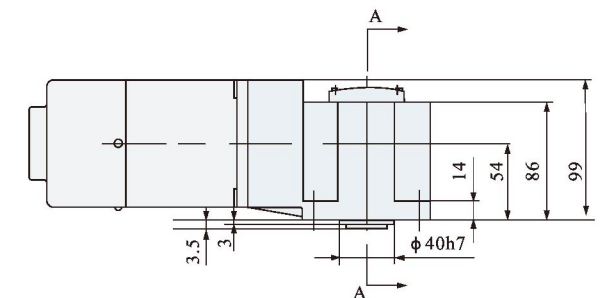
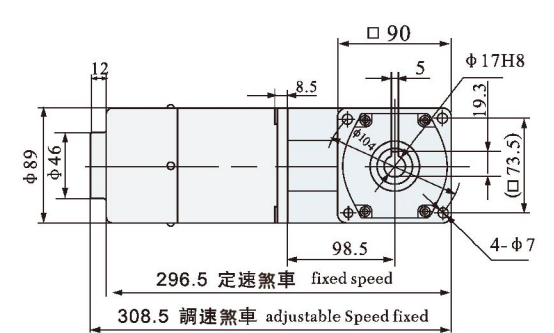
90型 CAD 尺寸
Model 90 CAD size

組合:調速電機+直角中空減速箱
減速比:1:3~450
Combination: adjustable speed motor + right angle hollow deceleration gear box
Deceleration ratio: 1:3~450



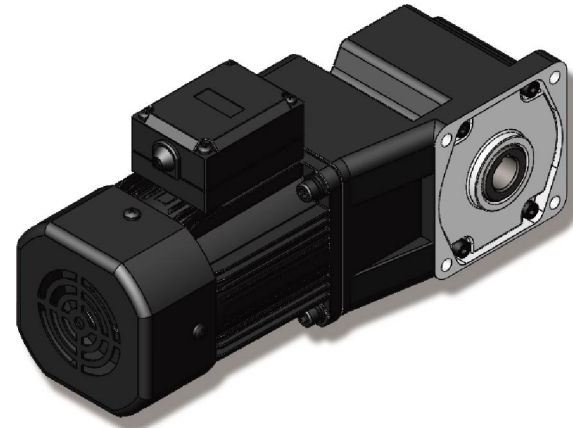
90型 CAD 尺寸
Model 90 CAD size

組合:煞車定速/調速電機+直角中空減速箱
減速比:1:3~450
Combination: fixed speed / adjustable speed brake motor + right angle hollow deceleration gear box
Deceleration ratio: 1:3~450



60W

90mm



電機特性

List of motor characteristics

電機型號 Motor model	規格 Specs	輸出功率 Output Power W	電源電壓 Voltage V	頻率 Frequency Hz	電流 Current A	起動扭矩 Starting Torque mN.m gf.cm		額定扭矩 Rated Torque mN.m gf.cm		額定轉速 Rated Revolution r/min	電容量/耐壓 Capacity/ve μF/VAC
公司型號 JWD types											
5IK60GU-CF 5IK60A-CF	感應 Induction	60	單相 1-phase 220	50	0.45	551	5510	441	4410	1350	3.5/450
				60	0.48	462	4620	370	3700	1650	3.5/450
5RK60GU-CF 5RK60A-CF	可逆 Reversible	60	單相 1-phase 220	50	0.5	837	8370	670	6700	1350	4/450
				60	0.52	692	6920	554	5540	1650	4/450
5IK60GU-AF 5IK60A-AF	感應 Induction	60	單相 1-phase 110	50	0.90	551	5510	441	4410	1350	14/250
				60	0.88	462	4620	370	3700	1650	14/250
5RIK60GU-AF 5RK60A-AF	可逆 Reversible	60	單相 1-phase 110	50	1.0	837	8370	670	6700	1350	16/250
				60	1.2	692	6920	554	5540	1650	16/250
5IK60GU-UF 5IK60A-UF	—	60	三相 3-phase 380	50	0.30	551	5510	441	4410	1350	—
				60	0.28	462	4620	370	3700	1650	—
5RK60GU-SF 5RK60A-SF	—	60	三相 3-phase 220	50	0.52	551	5510	441	4410	1350	—
				60	0.48	462	4620	370	3700	1650	—

- 上表參數是指電機單體，不附加任何負荷裝置。
- 電機額定轉速、額定電流允許在±5%範圍內變動。

- Parameters in above table refer to motor alone, without any load device.
- Permissible change in rated speed and rated current of the motor is within the range of ±5%.

減速電機允許負載

Allowable load for the gear motor

減速參數 Geared-down parameter	同步轉速r/min Synchronous speed																						
	500	300	200	150	120	100	83	75	60	50	40	35	30	25	20	16.7	15	12	10	8	5	3.3	
減速比 ratio	3	5	7.5	10	12.5	15	18	20	25	30	36	40	50	60	75	90	100	120	150	180	300	450	
最大允許負載 Max allowable load	60W	kg.cm	11	18	27	36	41	50	59.6	65	81	98	117	130	147								200
		N.m	1.08	1.77	2.64	3.57	4.02	4.80	5.84	6.24	8.03	9.64	11.5	12.8	14.4								19.6

- 轉速是以電動機的同步轉速為基準除以減速比而算出的數值。實際轉速將隨負載大小變化而比所示數值減少2~15%左右。
- 希望以大於上表的減速比進一步減速時，可在電動機與減速機之間安裝減速比為10的中間減速機。
- 當負載扭矩超過減速電機最大允許負載扭矩，並有堵轉情況存在時，請在減速箱輸出軸和負載連接處加裝扭矩限制裝置，確保齒輪減速箱正常運行。
- The speed is based on the synchronous motor speed reduction ratio as a benchmark calculated by dividing the value of. Actual speed will vary the size of the load changes in less than the values shown in 2~15%.
- Hope to the table of the reduction ratio is greater than the further reduction, it would be installed between the motor and the reducer reduction ratio of 10 the middle of the reducer.
- When the load torque exceeds the maximum allowable load torque gear motor, and a locked rotor situation exists, please slow down box at the junction of the output shaft and load torque limit device installed to ensure the normal operation gearbox.

直角中實減速箱

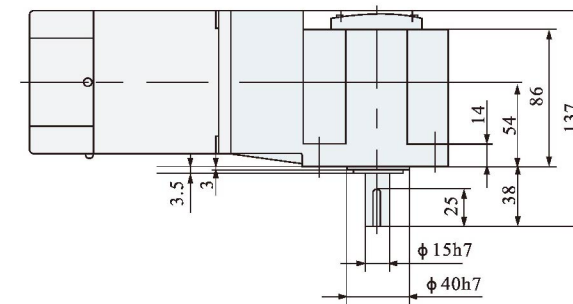
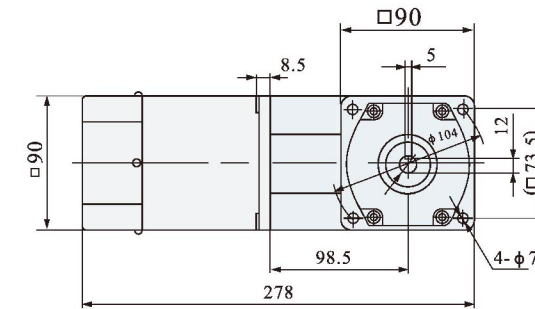
Right angle solid-shaft reduction gear box



型號:5GU □ RT-K Model:5GU □ RT-K
減速比: 1:3~450 Gear ratio: 1:3~450

90型 CAD 尺寸 Model 90 CAD size

組合: 定速電機+直角中實減速箱
減速比: 1:3~450
Combination: fixed speed motor + right angle solid reduction gear box
Deceleration ratio: 1:3~450



直角中空減速箱

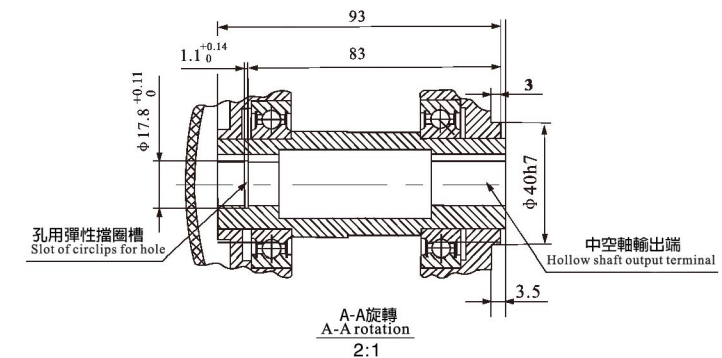
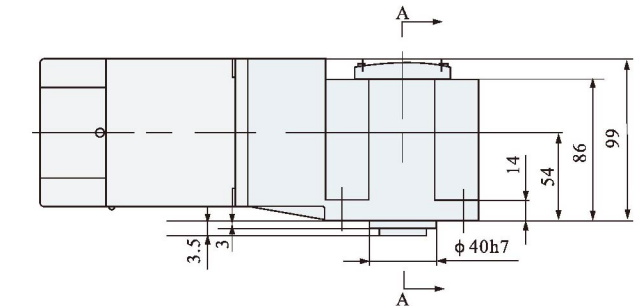
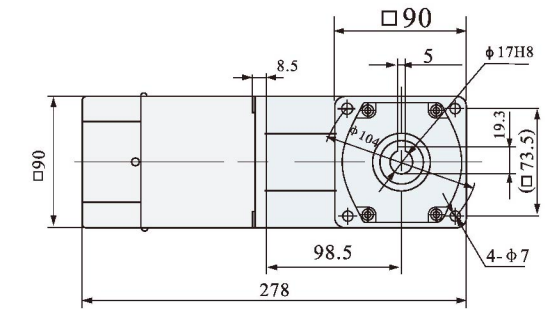
Right angle hollow-shaft reduction gear box



型號:5GU □ RC-K Model:5GU □ RC-K
減速比: 1:3~450 Gear ratio: 1:3~450

90型 CAD 尺寸 Model 90 CAD size

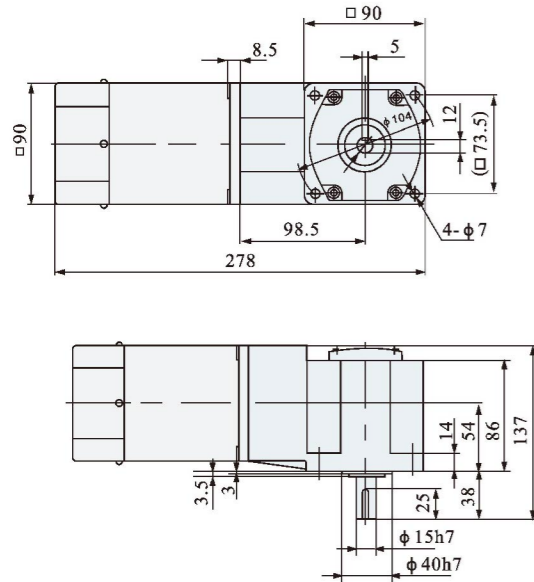
組合: 定速電機+直角中空減速箱
減速比: 1:3~450
Combination: fixed speed motor + right angle hollow reduction gear box
Deceleration ratio: 1:3~450



90型 CAD 尺寸
Model 90 CAD size

組合：調速電機+直角中實減速箱
減速比：1:3~450

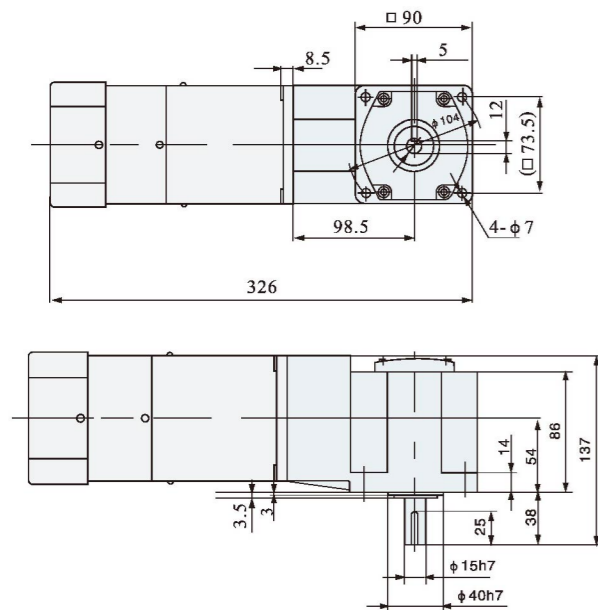
Combination: adjustable speed motor + right angle solid reduction gear box
Deceleration ratio: 1:3~450



90型 CAD 尺寸
Model 90 CAD size

組合：煞車定速/調速電機+直角中實減速箱
減速比：1:3~450

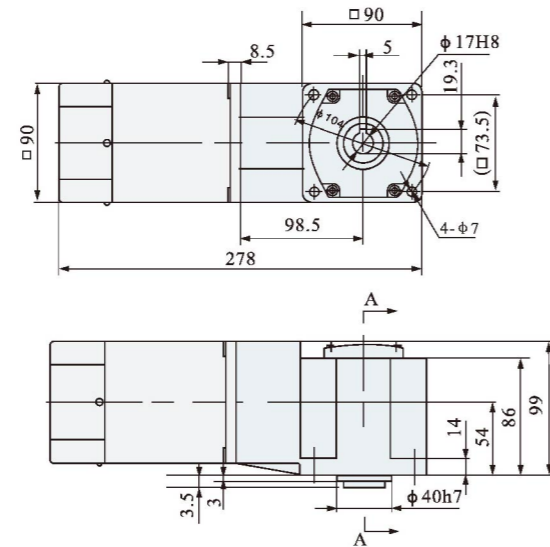
Combination: fixed speed / adjustable speed brake motor + right angle solid deceleration gear box
Deceleration ratio: 1:3~450



90型 CAD 尺寸
Model 90 CAD size

組合：調速電機+直角中空減速箱
減速比：1:3~450

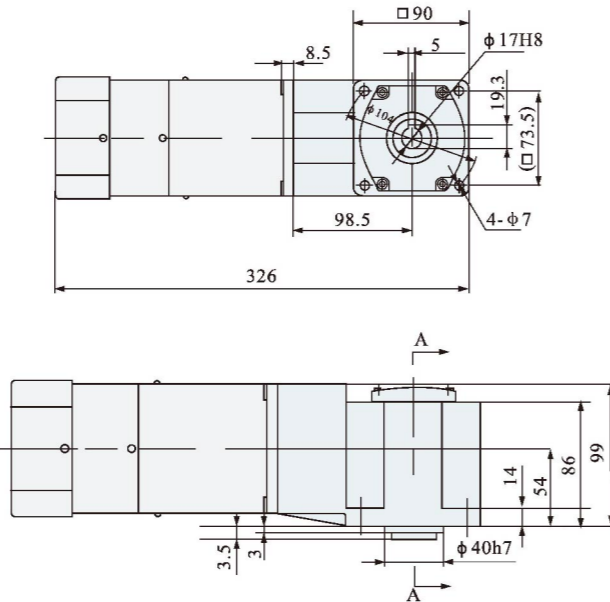
Combination: adjustable speed motor + right angle hollow deceleration gear box
Deceleration ratio: 1:3~450



90型 CAD 尺寸
Model 90 CAD size

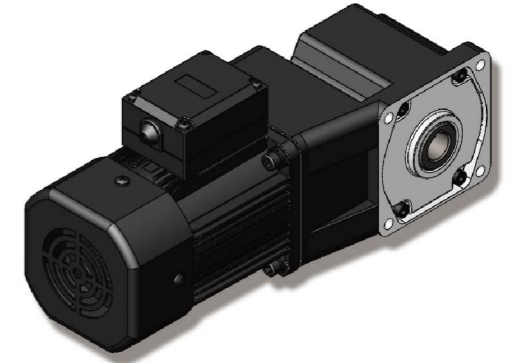
組合：煞車定速/調速電機+直角中空減速箱
減速比：1:3~450

Combination: fixed speed / adjustable speed brake motor + right angle hollow deceleration gear box
Deceleration ratio: 1:3~450



90/120W

90mm



電機特性

List of motor characteristics

電機型號 Motor model	規格 Specs	輸出功率 Output Power W	電源電壓 Voltage V	頻率 Frequency Hz	電流 Current A	起動扭矩 Starting Torque		額定扭矩 Rated Torque		額定轉速 Rated Revolution r/min	電容量/耐壓 Capacity/Ve μF/VAC
						mN.m	gf.cm	mN.m	gf.cm		
5IK90GU-CF 5IK90A-CF	感應 Induction	90	單相 1-phase 220	50	0.62	837	8370	670	6700	1350	5/450
				60	0.60	692	6920	554	5540	1650	5/450
5RK90GU-CF 5RK90A-CF	可逆 Reversible	90	單相 1-phase 220	50	0.68	837	8370	670	6700	1350	6/450
				60	0.72	692	6920	554	5540	1650	6/450
5IK90GU-AF 5IK90A-AF	感應 Induction	90	單相 1-phase 110	50	1.25	837	8370	670	6700	1350	20/250
				60	1.2	692	6920	554	5540	1650	18/250
5RK90GU-AF 5RK90A-AF	可逆 Reversible	90	單相 1-phase 110	50	1.38	837	8370	670	6700	1350	24/250
				60	1.5	692	6920	554	5540	1650	24/250
5IK90GU-UF 5IK90A-UF	—	90	三相 3-phase 380	50	0.32	837	8370	670	6700	1350	—
				60	0.3	692	6920	554	5540	1650	—
5RK90GU-SF 5RK90A-SF	—	90	三相 3-phase 220	50	0.55	837	8370	670	6700	1350	—
				60	0.48	692	6920	554	5540	1650	—
5IK120GU-CF 5IK120A-CF	感應 Induction	120	單相 1-phase 220	50	0.85	1137	11370	910	9100	1350	6/450
				60	0.82	955	9550	764	7640	1650	6/450
5RK120GU-CF 5RK120A-CF	可逆 Reversible	120	單相 1-phase 220	50	0.95	1137	11370	910	9100	1350	8/450
				60	1.0	955	9550	764	7640	1650	8/450
5IK120GU-AF 5IK120A-AF	感應 Induction	120	單相 1-phase 110	50	1.7	1137	11370	910	9100	1350	24/250
				60	1.65	955	9550	764	7640	1650	24/250
5RK120GU-AF 5RK120A-AF	可逆 Reversible	120	單相 1-phase 110	50	1.9	1137	11370	910	9100	1350	30/250
				60	2.1	955	9550	764	7640	1650	30/250
5RK120GU-UF 5RK120A-UF	—	120	三相 3-phase 380	50	0.34	1137	11370	910	9100	1350	—
				60	0.31	955	9550	764	7640	1650	—
5RK120GU-SF 5RK120A-SF	—	120	三相 3-phase 220	50	0.59	1137	11370	910	9100	1350	—
				60	0.54	955	9550	764	7640	1650	—

- 上表參數是指電機單體，不附加任何負荷裝置。
- 電機額定轉速、額定電流允許在±5%範圍內變動。

- Parameters in above table refer to motor alone, without any load device.
- Permissible change in rated speed and rated current of the motor is within the range of ±5%.

減速電機允許負載

Allowable load for the gear motor

減速參數 Geared-down parameter	同步轉速 r/min Synchronous speed	減速比 i ratio																						
		500	300	200	150	120	100	83	75	60	50	45	37.5	30	25	20	16.7	15	12.5	10	8	5	3.3	
最大允許負載 Max allowable load	90W	kg.cm N.m	15.7 1.54	26.5 2.6	39.4 3.86	52.5 5.15	65.7 6.44	71 6.96	89.4 8.76	94.6 9.28	118 11.6	141 13.9	170 16.7	189 18.5	200 19.6									
	120W	kg.cm N.m	21.5 2.11	36 3.52	54 5.28	70 6.88	87.5 8.59	98 9.6	119 11.7	126 12.4	148 14.5	189 18.5	200 19.6											

- 轉速是以電動機的同步轉速為基準除以減速比而算出的數值。實際轉速將隨負載大小變化而比所示數值減少2~15%左右。
- 希望以大於上表的減速比進一步減速時，可在電動機與減速機之間安裝減速比為10的中間減速機。
- 當負載扭矩超過減速電機最大允許負載扭矩，並有堵轉情況存在時，請在減速箱輸出軸和負載連接處加裝扭矩限制裝置，確保齒輪減速箱正常運行。
- The speed is based on the synchronous motor speed reduction ratio as a benchmark calculated by dividing the value of. Actual speed will vary the size of the load changes in less than the values shown in 2~15%.
- Hope to the table of the reduction ratio is greater than the further reduction, it would be installed between the motor and the reducer reduction ratio of 10 the middle of the reducer.
- When the load torque exceeds the maximum allowable load torque gear motor, and a locked rotor situation exists, please slow down box at the junction of the output shaft and load torque limit device installed to ensure the normal operation gearbox.

直角中實減速箱

Right angle solid-shaft reduction gear box

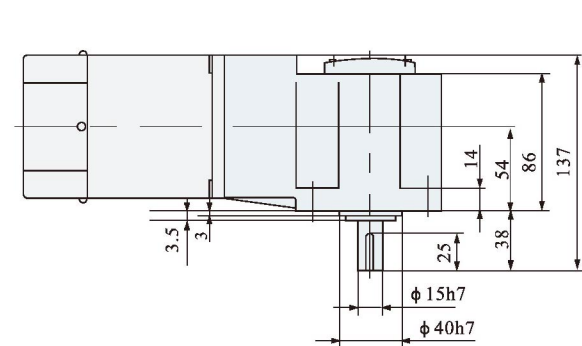
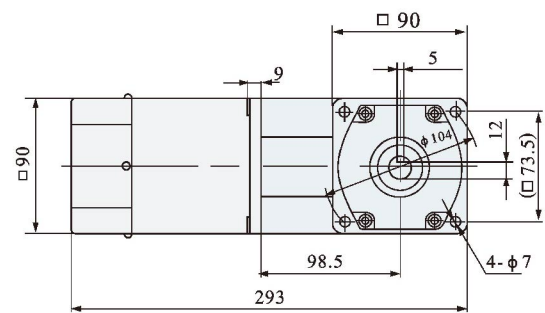


型號:5GU □ RT-K Model:5GU □ RT-K
減速比: 1:3~450 Gear ratio: 1:3~450

90型 CAD 尺寸
Model 90 CAD size

組合: 定速電機+直角中實減速箱
減速比: 1:3~450

Combination: fixed speed motor + right angle solid reduction gear box
Deceleration ratio: 1:3~450



直角中空減速箱

Right angle hollow-shaft reduction gear box

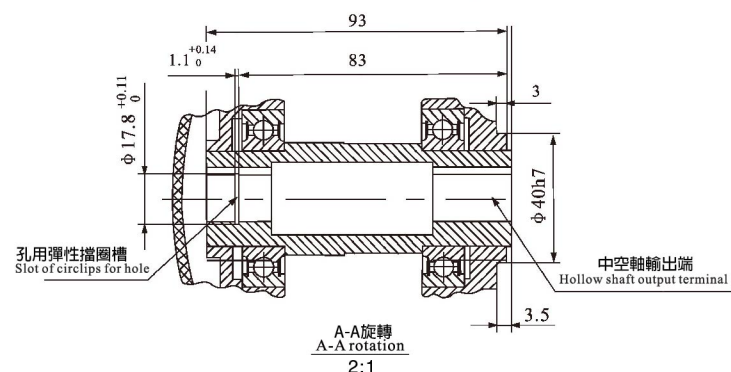
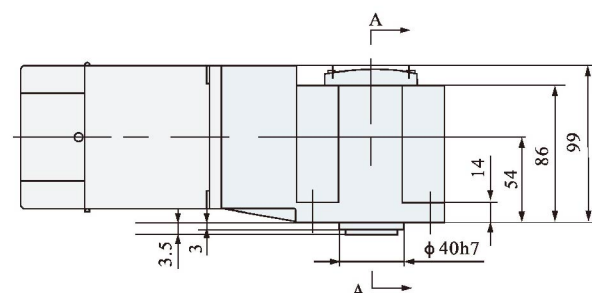
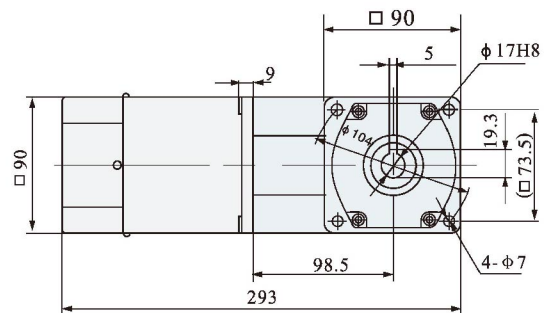


型號:5GU □ RC-K Model:5GU □ RC-K
減速比: 1:3~450 Gear ratio: 1:3~450

90型 CAD 尺寸
Model 90 CAD size

組合: 定速電機+直角中空減速箱
減速比: 1:3~450

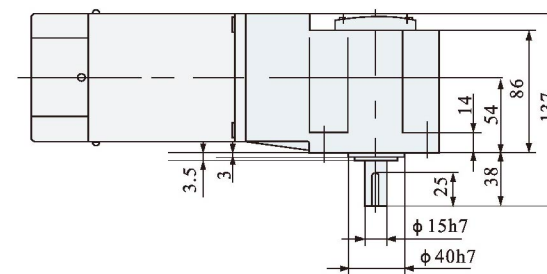
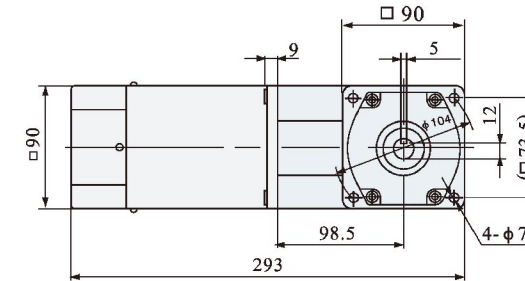
Combination: fixed speed motor + right angle hollow reduction gear box
Deceleration ratio: 1:3~450



90型 CAD 尺寸
Model 90 CAD size

組合: 調速電機+直角中實減速箱
減速比: 1:3~450

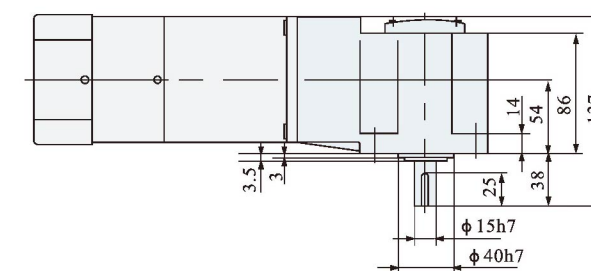
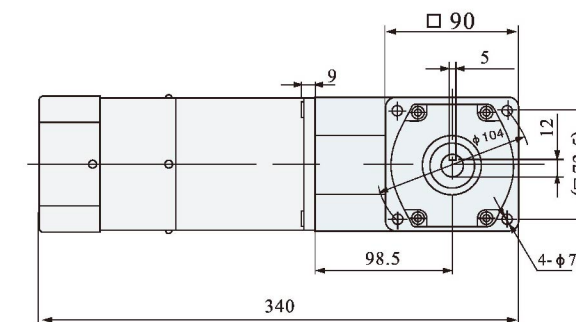
Combination: adjustable speed motor + right angle solid reduction gear box
Deceleration ratio: 1:3~450



90型 CAD 尺寸
Model 90 CAD size

組合: 煞車定速/調速電機+直角中實減速箱
減速比: 1:3~450

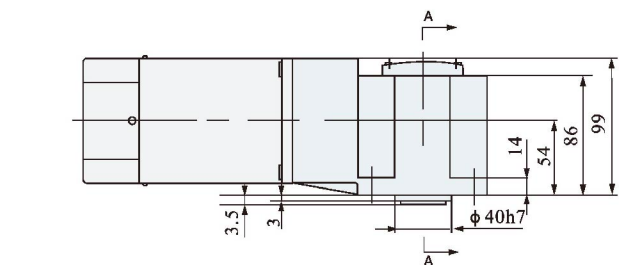
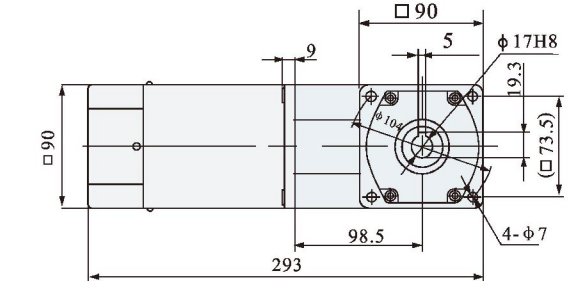
Combination: fixed speed / adjustable speed brake motor + right angle solid deceleration gear box
Deceleration ratio: 1:3~450



90型 CAD 尺寸
Model 90 CAD size

組合: 調速電機+直角中空減速箱
減速比: 1:3~450

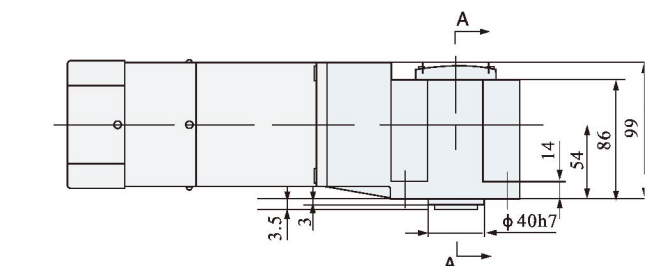
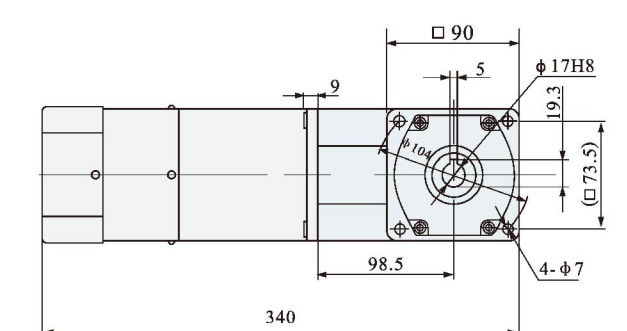
Combination: adjustable speed motor + right angle hollow deceleration gear box
Deceleration ratio: 1:3~450



90型 CAD 尺寸
Model 90 CAD size

組合: 煞車定速/調速電機+直角中空減速箱
減速比: 1:3~450

Combination: fixed speed / adjustable speed brake motor + right angle hollow deceleration gear box
Deceleration ratio: 1:3~450





120/140W

100mm

電機特性

List of motor characteristics

電機型號 Motor model	規格 Specs	輸出功率 Output Power W	電源電壓 Voltage V	頻率 Frequency Hz	電流 Current A	起動扭矩 Starting Torque		額定扭矩 Rated Torque		額定轉速 Rated Revolution r/min	電容量/耐壓 Capacity/Ve μ F/VAC
						mN.m	gf.cm	mN.m	gf.cm		
6IK120GU-CF 6IK120A-CF	感應 Induction	120	單相 1-phase 220	50	1.0	1100	11000	880	8800	1350	6/450
6RK120GU-CF 6RK120A-CF	可逆 Reversible			60	1.0	925	9250	740	7400	1650	6/450
				50	1.2	1575	15750	1260	12600	1350	8/450
6RK120GU-AF 6RK120A-AF	可逆 Reversible			60	1.4	1225	12250	980	9800	1650	8/450
		50	1.7	1100	11000	880	8800	1350	30/250		
6IK120GU-AF 6IK120A-AF	感應 Induction	120	單相 1-phase 110	60	1.6	925	9250	740	7400	1650	28/250
				6RK120GU-AF 6RK120A-AF	可逆 Reversible	50	1.8	1575	15750	1260	12600
6RK120GU-UF 6IK120A-UF	—					60	2.0	1225	12250	980	9800
				6RK120GU-SF 6RK120A-SF	—	50	0.46	1100	11000	880	8800
6RK120GU-SF 6RK120A-SF	—	60	0.42			925	9250	740	7400	1650	—
		6IK140GU-CF 6IK140A-CF	感應 Induction	140	單相 1-phase 220	50	1.23	1285	12850	1028	10280
6RK140GU-CF 6RK140A-CF	可逆 Reversible					60	1.12	1078	10780	863	8630
		6RK140GU-AF 6IK140A-AF	可逆 Reversible			50	1.3	1285	12850	1028	10280
6RK140GU-AF 6RK140A-AF	可逆 Reversible					60	1.43	1078	10780	863	8630
		6IK140GU-AF 6IK140A-AF	感應 Induction	140	單相 1-phase 110	50	2.05	1285	12850	1028	10280
6RK140GU-AF 6RK140A-AF	可逆 Reversible					60	1.9	1078	10780	863	8630
		6RK140GU-UF 6RK140A-UF	—			50	2.2	1285	12850	1028	10280
6RK140GU-SF 6RK140A-SF	—					60	2.4	1078	10780	863	8630
		6RK140GU-UF 6RK140A-UF	—	140	三相 3-phase 380	50	0.55	1285	12850	1028	10280
6RK140GU-SF 6RK140A-SF	—					60	0.46	1078	10780	863	8630
		6RK140GU-SF 6RK140A-SF	—			50	0.88	1285	12850	1028	10280
6RK140GU-SF 6RK140A-SF	—					60	0.80	1078	10780	863	8630

- 上表參數是指電機單獨，不附加任何負荷裝置。
- 電機額定轉速、額定電流允許在±5%範圍內變動。

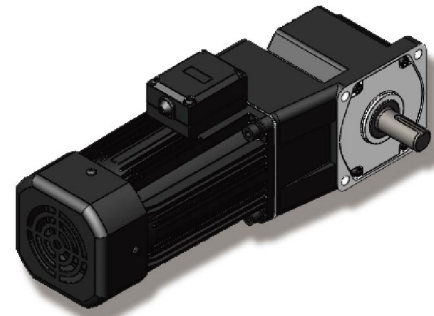
- Parameters in above table refer to motor alone, without any load device.
- Permissible change in rated speed and rated current of the motor is within the range of ±5%.

減速電機允許負載

Allowable load for the gear motor

減速參數 Geared-down parameter	同步轉速r/min Synchronous speed	減速比i ratio																									
		500	375	300	200	150	120	100	75	60	50	41	37	30	25	20	16.7	15	12	10	8	6.7	5	4.2	3.3		
最大允許負載 Max allowable load	120W	kg.cm 21.5	26.4	36	54	69.8	85	103	139	172	209	226	251												315	31	
		N.m 2.11	2.59	3.52	5.28	6.85	8.45	10.2	13.6	16.9	20.5	22.14	24.6												31	3.1	
	140W	kg.cm 25.1	30.8	42	63	73.5	99.2	120	147	200.7	221	238	265												330	32.5	
		N.m 2.46	3.02	4.11	6.16	8.02	9.86	11.8	14.4	19.73	21.7	23.4	26												32.5	3.25	

- 轉速是以電動機的同步轉速為基準除以減速比而算出的數值。實際轉速將隨負載大小變化而比所示數值減少2~15%左右。
- 希望以大於上表的減速比進一步減速時，可在電動機與減速機之間安裝減速比為10的中間減速機。
- 當負載扭矩超過減速電機最大允許負載扭矩，並有堵轉情況存在時，請在減速箱輸出軸和負載連接處加裝扭矩限制裝置，確保齒輪減速箱正常運行。
- The speed is based on the synchronous motor speed reduction ratio as a benchmark calculated by dividing the value of. Actual speed will vary the size of the load changes in less than the values shown in 2~15%.
- Hope to the table of the reduction ratio is greater than the further reduction, it would be installed between the motor and the reducer reduction ratio of 10 the middle of the reducer.
- When the load torque exceeds the maximum allowable load torque gear motor, and a locked rotor situation exists, please slow down box at the junction of the output shaft and load torque limit device installed to ensure the normal operation gearbox.



160/180W

100mm

電機特性

List of motor characteristics

電機型號 Motor model	規格 Specs	輸出功率 Output Power W	電源電壓 Voltage V	頻率 Frequency Hz	電流 Current A	起動扭矩 Starting Torque		額定扭矩 Rated Torque		額定轉速 Rated Revolution r/min	電容量/耐壓 Capacity/Ve μ F/VAC
						mN.m	gf.cm	mN.m	gf.cm		
6IK160GU-CF 6IK160A-CF	感應 Induction	160	單相 1-phase 220	50	1.25	1575	15750	1260	12600	1350	8/450
6RK160GU-CF 6RK160A-CF	可逆 Reversible			60	1.24	1225	12250	980	9800	1650	8/450
				50	1.4	1575	15750	1260	12600	1350	10/450
6RK160GU-AF 6RK160A-AF	可逆 Reversible			60	1.46	1225	12250	980	9800	1650	10/450
		50	2.4	1575	15750	1260	12600	1350	32/250		
6IK160GU-AF 6IK160A-AF	感應 Induction	160	單相 1-phase 110	60	2.2	1225	12250	980	9800	1650	30/250
				6RK160GU-AF 6RK160A-AF	可逆 Reversible	50	2.6	1575	15750	1260	12600
6RK160GU-UF 6IK160A-UF	—					60	2.8	1225	12250	980	9800
				6RK160GU-SF 6RK160A-SF	—	50	0.55	1468	14680	1175	11750
6RK160GU-SF 6RK160A-SF	—	60	0.50			1232	12320	986	9860	1650	—
		6IK180GU-CF 6IK180A-CF	感應 Induction	180	單相 1-phase 220	50	1.50	1837	18370	1470	14700
6RK180GU-CF 6RK180A-CF	可逆 Reversible					60	1.46	1540	15400	1232	12320
		6RK180GU-AF 6IK180A-AF	可逆 Reversible			50	1.50	1837	18370	1470	14700
6RK180GU-SF 6RK180A-SF	—					60	1.46	1540	15400	1232	12320
		6IK180GU-AF 6IK180A-AF	感應 Induction	180	單相 1-phase 110	50	2.8	1837	18370	1470	14700
6RK180GU-AF 6RK180A-AF	可逆 Reversible					60	2.6	1540	15400	1232	12320
		6RK180GU-UF 6RK180A-UF	—			50	2.8	1837	18370	1470	14700
6RK180GU-SF 6RK180A-SF	—					60	2.6	1540	15400	1232	12320
		6IK180GU-UF 6IK180A-UF	—	180	三相 3-phase 380	50	0.80	1825	18250	1460	14600
6RK180GU-UF 6RK180A-UF	—					60	0.75	1475	14750	1180	11800
		6RK180GU-SF 6RK180A-SF	—			50	1.05	1825	18250	1460	14600
6RK180GU-SF 6RK180A-SF	—					60	1.0	1475	14750	1180	11800

- 上表參數是指電機單獨，不附加任何負荷裝置。
- 電機額定轉速、額定電流允許在±5%範圍內變動。

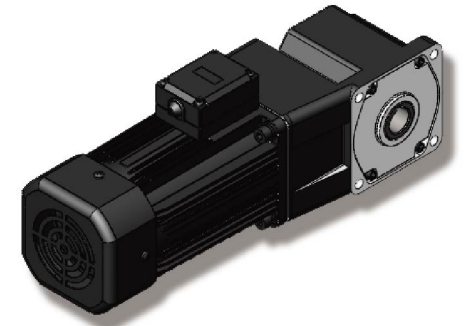
- Parameters in above table refer to motor alone, without any load device.
- Permissible change in rated speed and rated current of the motor is within the range of ±5%.

減速電機允許負載

Allowable load for the gear motor

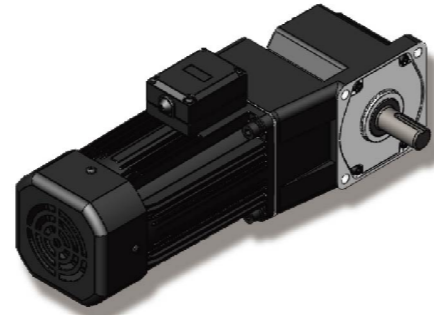
減速參數 Geared-down parameter	同步轉速r/min Synchronous speed	減速比i ratio																									
		500	375	300	200	150	120	100	75	60	50	41	37	30	25	20	16.7	15	12	10	8	6.7	5	4.2	3.3		
最大允許負載 Max allowable load	160W	kg.cm 28.7	35.2	48	72	87	113.3	137.3	174	229	261	285	317	396												440	43
		N.m 2.81	3.45	4.69	7.04	8.53	11.27	13.53	17	22.6	25.6	28	31.1	38.8												43	4.3
	180W	kg.cm 32.3	39.6	54	81	94.7	127.5	154.5	189	237	284	310	344	430												440	43
		N.m 3.17	3.89	5.28	7.92	9.28	12.68	15.23	18.7	23.2	27.8	30.1	33.4	42.2												43	4.3

- 轉速是以電動機的同步轉速為基準除以減速比而算出的數值。實際轉速將隨負載大小變化而比所示數值減少2~15%左右。
- 希望以大於上表的減速比進一步減速時，可在電動機與減速機之間安裝減速比為10的中間減速機。
- 當負載扭矩超過減速電機最大允許負載扭矩，並有堵轉情況存在時，請在減速箱輸出軸和負載連接處加裝扭矩限制裝置，確保齒輪減速箱正常運行。
- The speed is based on the synchronous motor speed reduction ratio as a benchmark calculated by dividing the value of. Actual speed will vary the size of the load changes in less than the values shown in 2~15%.
- Hope to the table of the reduction ratio is greater than the further reduction, it would be installed between the motor and the reducer reduction ratio of 10 the middle of the reducer.
- When the load torque exceeds the maximum allowable load torque gear motor, and a locked rotor situation exists, please slow down box at the junction of the output shaft and load torque limit device installed to ensure the normal operation gearbox.



200/250W

100mm



電機特性

List of motor characteristics

電機型號 Motor model	規格 Specs	輸出功率 Output Power W	電源電壓 Voltage V	頻率 Frequency Hz	電流 Current A	起動扭矩 Starting Torque		額定扭矩 Rated Torque		額定轉速 Rated Revolution r/min	電容量/耐壓 Capacity/Ve μF/VAC
						mN.m	gf.cm	mN.m	gf.cm		
6IK200GU-CF 6IK200A-CF	感應 Induction	200	單相 1-phase 220	50	1.55	1485	14850	1414	14140	1350	8/450
60				1.5	1294	12940	1232	12320	1650	8/450	
6RK200GU-CF 6RK200A-CF	可逆 Reversible			50	1.55	1485	14850	1414	14140	1350	10/450
60				1.5	1294	12940	1232	12320	1650	10/450	
6IK200GU-AF 6IK200A-AF	感應 Induction	200	單相 1-phase 110	50	3.0	1485	14850	1414	14140	1350	32/250
60				2.8	1294	12940	1232	12320	1650	30/250	
6RK200GU-AF 6RK200A-AF	可逆 Reversible			50	3.0	1485	14850	1414	14140	1350	40/250
60				2.8	1294	12940	1232	12320	1650	36/250	
6IK200GU-UF 6IK200A-UF	—	200	三相 3-phase 380	50	0.9	1600	16000	1450	14500	1350	—
60				0.87	1386	13860	1260	12600	1650	—	
6RK200GU-SF 6RK200A-SF	—	200	三相 3-phase 220	50	1.15	1600	16000	1450	14500	1350	—
60				1.1	1386	13860	1260	12600	1650	—	
6IK250GU-CF 6IK250A-CF	感應 Induction	250	單相 1-phase 220	50	1.6	2020	20200	1837	18370	1350	10/450
60				1.55	1700	17000	1540	15400	1650	10/450	
6RK250GU-CF 6RK250A-CF	可逆 Reversible			50	1.6	2020	20200	1837	18370	1350	12/450
60				1.55	1700	17000	1540	15400	1650	12/450	
6IK250GU-AF 6IK250A-AF	感應 Induction	250	單相 1-phase 110	50	3.2	2020	20200	1837	18370	1350	40/250
60				3.0	1700	17000	1540	15400	1650	40/250	
6RK250GU-AF 6RK250A-AF	可逆 Reversible			50	3.3	2020	20200	1837	18370	1350	48/250
60				3.2	1700	17000	1540	15400	1650	48/250	
6RK250GU-UF 6RK250A-UF	—	250	三相 3-phase 380	50	1.3	2022	20220	1840	18400	1350	—
60				1.2	1760	17600	1600	16000	1650	—	
6RK250GU-SF 6RK250A-SF	—	250	三相 3-phase 220	50	1.21	2022	20220	1840	18400	1350	—
60				1.15	1760	17600	1600	16000	1650	—	

● 上表參數是指電機單體，不附加任何負荷裝置。
● 電機額定轉速、額定電流允許在±5%範圍內變動。

● Parameters in above table refer to motor alone, without any load device.
● Permissible change in rated speed and rated current of the motor is within the range of ±5%.

減速電機允許負載

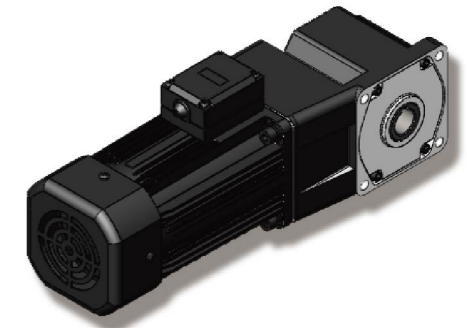
Allowable load for the gear motor

減速參數 Geared-down parameter	同步轉速r/min Synchronous speed	減速比i ratio																							
		500	375	300	200	150	120	100	75	60	50	40	37	30	25	20	16.7	15	12	10	8	6.7	7	4.2	3.3
最大允許負載 Max allowable load	200W	kg.cm 3.86	44 4.32	66 6.44	89.8 8.8	119 11.7	149 14.5	180 17.6	239 23.4	299 29.3	358 35.1	392 38.4	435 42.6												440 43
	250W	kg.cm 4.83	55.1 5.4	82.1 8.1	112 11	149 14.6	183 18.3	224 22	298 29.3	375 36.6	438 43												440 43		

● 轉速是以電動機的同步轉速為基準除以減速比而算出的數值。實際轉速將隨負載大小變化而比所示數值減少2~15%左右。
● 希望以大於上表的減速比進一步減速時，可在電動機與減速機之間安裝減速比為10的中間減速機。
● 當負載扭矩超過減速電機最大允許負載扭矩，並有堵轉情況存在時，請在減速箱輸出軸和負載連接處加裝扭矩限制裝置，確保齒輪減速箱正常運行。
● The speed is based on the synchronous motor speed reduction ratio as a benchmark calculated by dividing the value of. Actual speed will vary the size of the load changes in less than the values shown in 2~15%.
● Hope to the table of the reduction ratio is greater than the further reduction, it would be installed between the motor and the reducer reduction ratio of 10 the middle of the reducer.
● When the load torque exceeds the maximum allowable load torque gear motor, and a locked rotor situation exists, please slow down box at the junction of the installed to ensure the norm

370W

100mm



電機特性

List of motor characteristics

電機型號 Motor model	規格 Specs	輸出功率 Output Power W	電源電壓 Voltage V	頻率 Frequency Hz	電流 Current A	起動扭矩 Starting Torque		額定扭矩 Rated Torque		額定轉速 Rated Revolution r/min	電容量/耐壓 Capacity/Ve μF/VAC
						mN.m	gf.cm	mN.m	gf.cm		
6IK370GU-CF 6IK370A-CF	感應 Induction	370	單相 1-phase 220	50	2.3	2944	29440	2560	25660	1350	15/450
60				2.1	2622	26220	2280	22880	1650	15/450	
6RK370GU-CF 6RK370A-CF	可逆 Reversible			50	2.3	2944	29440	2560	25660	1350	15/450
60				2.1	2622	26220	2280	22880	1650	15/450	
6IK370GU-AF 6IK370A-AF	感應 Induction	370	單相 1-phase 110	50	3.0	2944	29440	2560	25660	1350	32/250
60				2.8	2622	26220	2280	22880	1650	30/250	
6RK370GU-AF 6RK370A-AF	可逆 Reversible			50	3.0	2944	29440	2560	25660	1350	40/250
60				2.8	2622	26220	2280	22880	1650	36/250	
6IK370GU-UF 6IK370A-UF	—	370	三相 3-phase 380	50	1.4	3018	30180	2624	26240	1350	—
60				1.2	2680	26800	2330	23300	1650	—	
6RK370GU-SF 6RK370A-SF	—	370	三相 3-phase 220	50	2.5	3018	30180	2624	26240	1350	—
60				2.0	2680	26800	2330	23300	1650	—	

● 上表參數是指電機單體，不附加任何負荷裝置。
● 電機額定轉速、額定電流允許在±5%範圍內變動。

● Parameters in above table refer to motor alone, without any load device.
● Permissible change in rated speed and rated current of the motor is within the range of ±5%.

減速電機允許負載

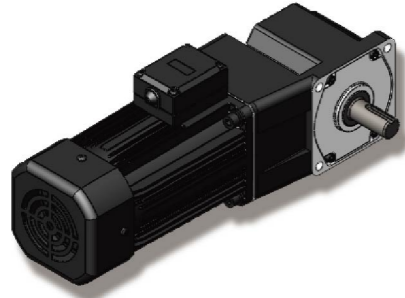
Allowable load for the gear motor

減速參數 Geared-down parameter	同步轉速r/min Synchronous speed	減速比i ratio																				
		500	375	300	200	150	120	100	75	60	50	40	37	30	25	20	15	12	10	8	6.7	7
最大允許負載 Max allowable load	370W	kg.cm 6.22	81.5 7.99	106 10.4	142 14.0	190 18.6	238 23.3	285 28	381 37.3												440 43	

● 轉速是以電動機的同步轉速為基準除以減速比而算出的數值。實際轉速將隨負載大小變化而比所示數值減少2~15%左右。
● 希望以大於上表的減速比進一步減速時，可在電動機與減速機之間安裝減速比為10的中間減速機。
● 當負載扭矩超過減速電機最大允許負載扭矩，並有堵轉情況存在時，請在減速箱輸出軸和負載連接處加裝扭矩限制裝置，確保齒輪減速箱正常運行。
● The speed is based on the synchronous motor speed reduction ratio as a benchmark calculated by dividing the value of. Actual speed will vary the size of the load changes in less than the values shown in 2~15%.
● Hope to the table of the reduction ratio is greater than the further reduction, it would be installed between the motor and the reducer reduction ratio of 10 the middle of the reducer.
● When the load torque exceeds the maximum allowable load torque gear motor, and a locked rotor situation exists, please slow down box at the junction of the output shaft and load torque limit device installed to ensure the normal operation gearbox.

直角中實減速箱

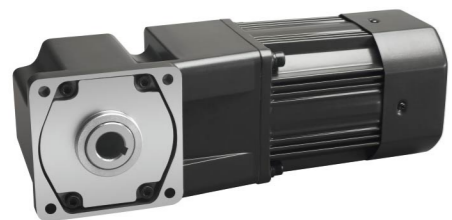
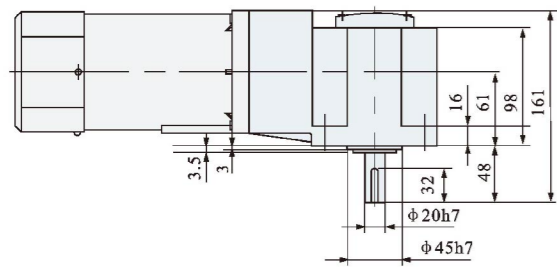
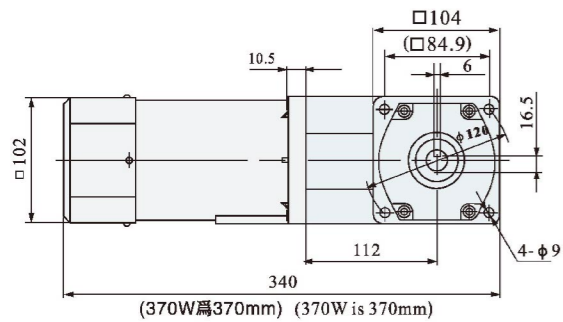
Right angle solid-shaft reduction gear box



型號:6GU □ RT-K Model:6GU □ RT-K
減速比:1:3~450 Gear ratio:1:3~450

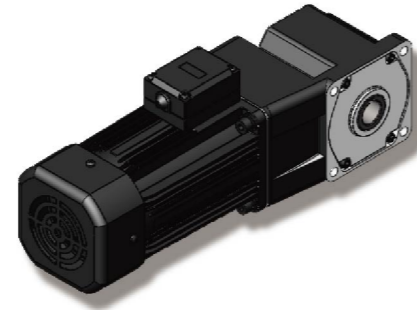
100型 CAD 尺寸
Model 100 CAD size

組合:定速電機+直角中實減速箱
減速比:1:3~450
Combination: fixed speed motor + right angle solid reduction gear box
Deceleration ratio:1:3~450



直角中空減速箱

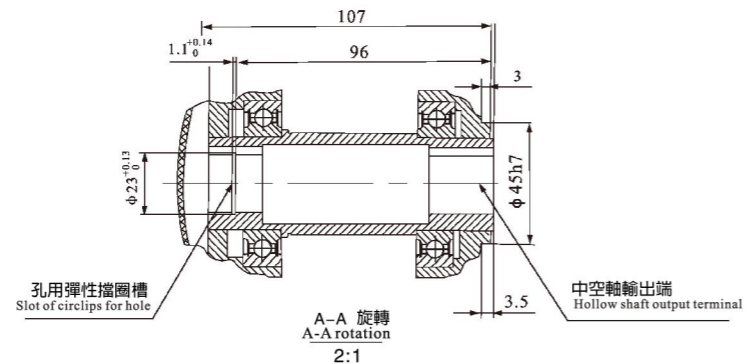
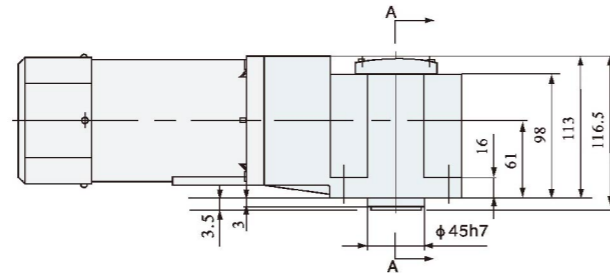
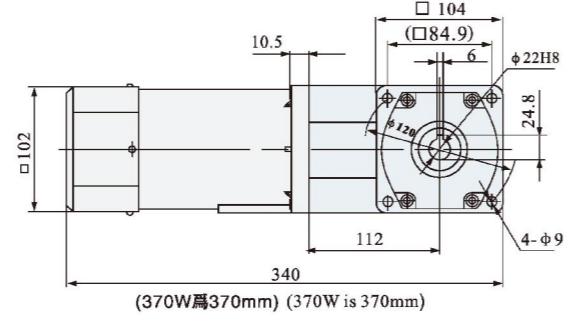
Right angle hollow-shaft reduction gear box



型號:6GU □ RC-K Model:6GU □ RC-K
減速比:1:3~450 Gear ratio:1:3~450

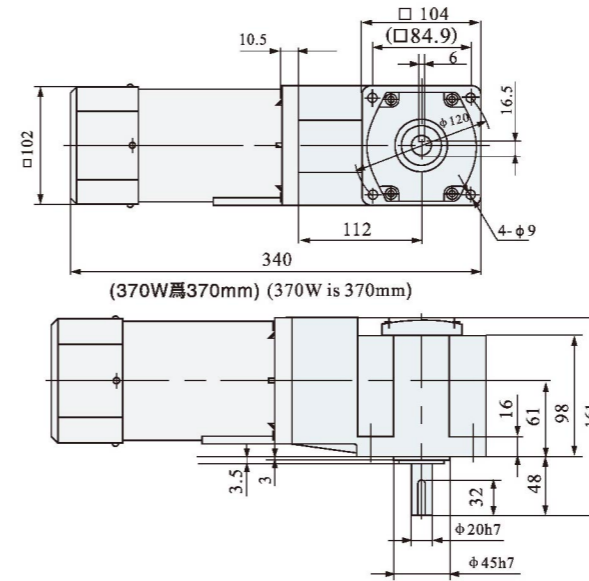
100型 CAD 尺寸
Model 100 CAD size

組合:定速電機+直角中空減速箱
減速比:1:3~450
Combination: fixed speed motor + right angle hollow reduction gear box
Deceleration ratio:1:3~450



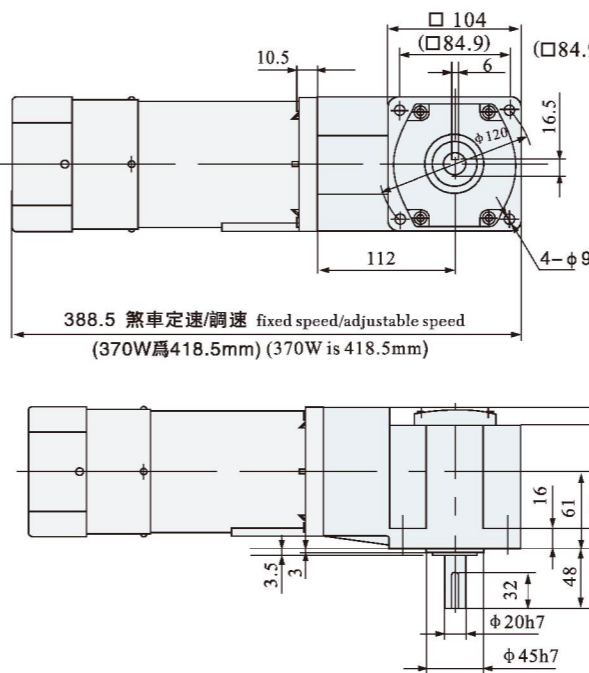
100型 CAD 尺寸
Model 100 CAD size

組合:調速電機+直角中實減速箱
減速比:1:3~450
Combination: adjustable speed motor + right angle solid reduction gear box
Deceleration ratio:1:3~450



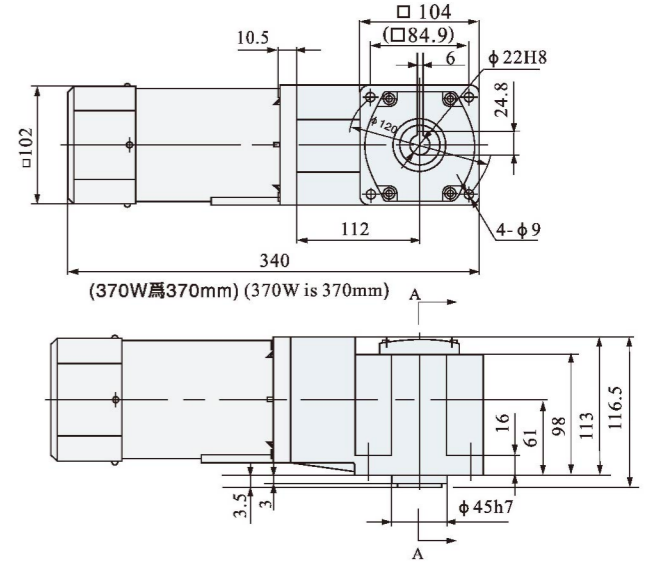
100型 CAD 尺寸
Model 100 CAD size

組合:煞車定速/調速電機+直角中實減速箱
減速比:1:3~450
Combination: fixed speed / adjustable speed brake motor + right angle solid deceleration gear box
Deceleration ratio:1:3~450



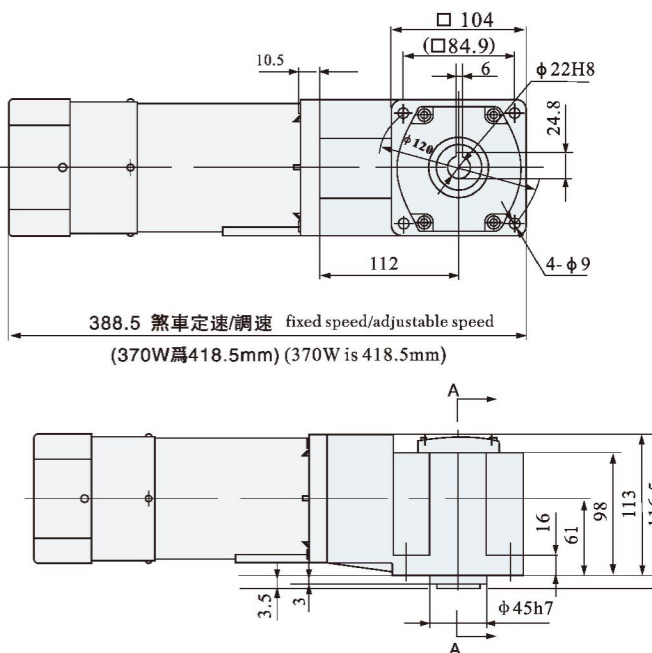
100型 CAD 尺寸
Model 100 CAD size

組合:調速電機+直角中空減速箱
減速比:1:3~450
Combination: adjustable speed motor + right angle hollow deceleration gear box
Deceleration ratio:1:3~450

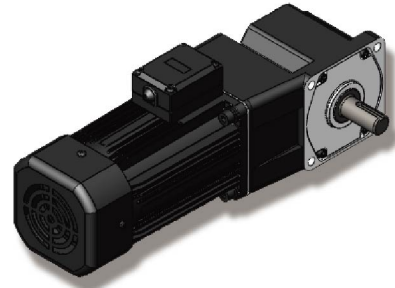


100型 CAD 尺寸
Model 100 CAD size

組合:煞車定速/調速電機+直角中空減速箱
減速比:1:3~450
Combination: fixed speed / adjustable speed brake motor + right angle hollow deceleration gear box
Deceleration ratio:1:3~450



直角中實減速箱
Right angle solid-shaft reduction gear box

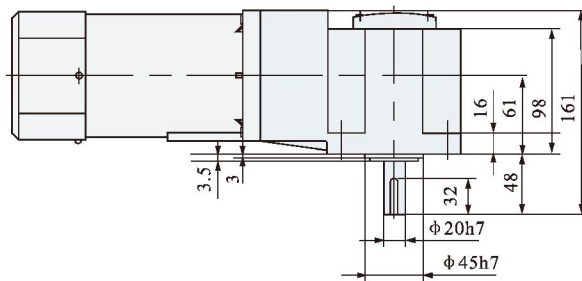
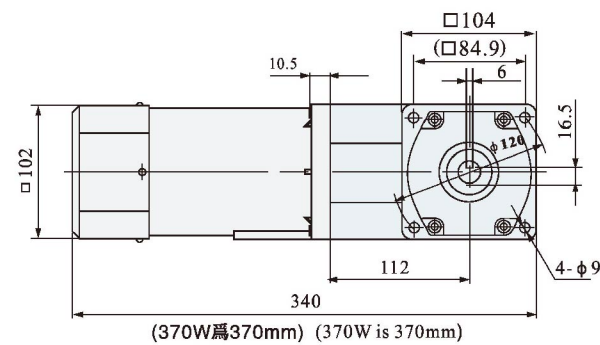


型號:6GU □ RT-K Model:6GU □ RT-K
減速比:1:3~450 Gear ratio:1:3~450

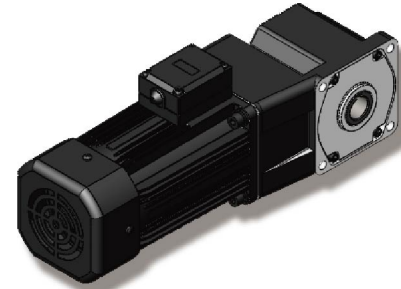
100型 CAD 尺寸
Model 100 CAD size

組合:定速電機+直角中實減速箱
減速比:1:3~450

Combination: fixed speed motor + right angle solid reduction gear box
Deceleration ratio:1:3~450



直角中空減速箱
Right angle hollow-shaft reduction gear box

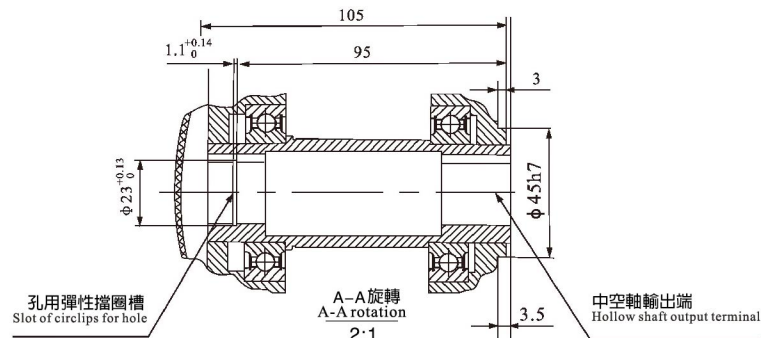
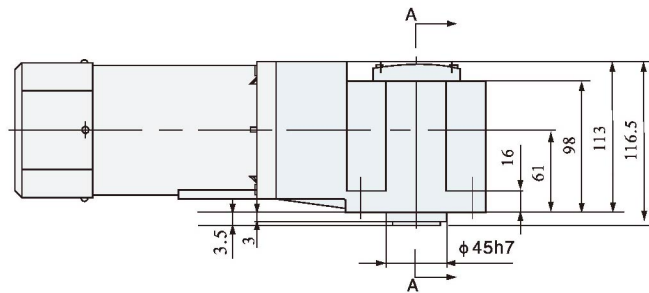
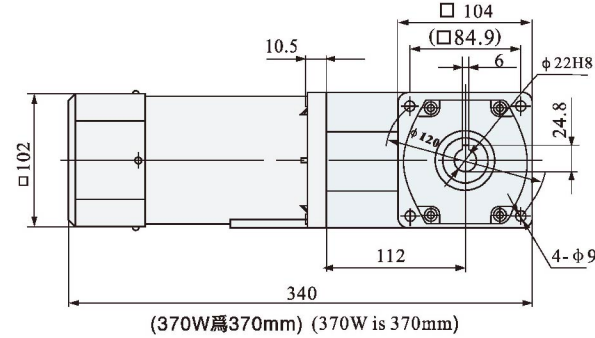


型號:6GU □ RC-K Model:6GU □ RC-K
減速比:1:3~450 Gear ratio:1:3~450

100型 CAD 尺寸
Model 100 CAD size

組合:定速電機+直角中空減速箱
減速比:1:3~450

Combination: fixed speed motor + right angle hollow reduction gear box
Deceleration ratio:1:3~450



400W

□ 145mm



電機特性

List of motor characteristics

電機型號 Motor model	規格 Specs	輸出功率 Output Power W	電源電壓 Voltage V	頻率 Frequency Hz	電流 Current A	起動扭矩 Starting Torque		額定扭矩 Rated Torque		額定轉速 Rated Revolution r/min
						mN.m	gf.cm	mN.m	gf.cm	
8IK400GU-UF	感應 Induction	400	三相 3-phase 380	50	1.3	6100	61000	2800	28000	1410
60				1.18	5060	50600	2320	23200	1700	
三相 3-phase 220			50	2.25	6100	61000	2800	28000	1410	
			60	2.05	5060	50600	2320	23200	1700	

- 上表參數是指電機單體，不附加任何負荷裝置。
- 電機額定轉速、額定電流允許在±5%範圍內變動。
- Parameters in above table refer to motor alone, without any load device.
- Permissible change in rated speed and rated current of the motor is within the range of ±5%.

直角中實/中空減速箱

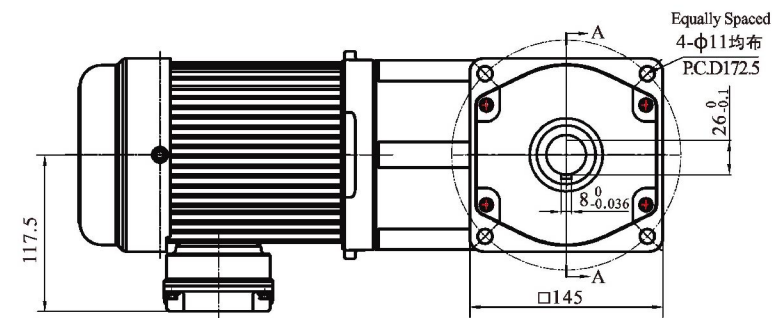
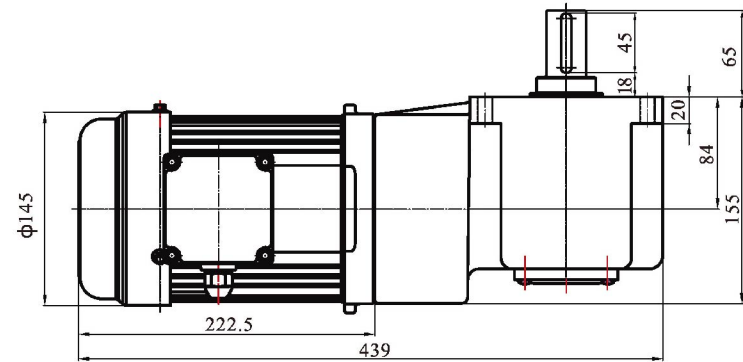
減速比	5	6	7.5	10	12.5	15	20	25	30	36	50	60	75	80	90	100	120	150	180	200
50Hz轉速 r/min	300	250	200	150	120	100	75	60	50	41.7	30	25	20	18.8	16.7	15	12.5	10	8.3	7.5
額定轉矩 N.m	13.8	16.6	20.7	27.7	34.7	41.6	55.5	69.2	83.2	99.7	138.3	166.4	207.5	221	248.6	250				

- 轉速是以電動機的同步轉速為基準除以減速比而算出的數值。實際轉速將隨負載大小變化而比所示數值減少2~15%左右。
- 希望以大於上表的減速比進一步減速時，可在電動機與減速機之間安裝減速比為10的中間減速機。
- 當負載扭矩超過減速電機最大允許負載扭矩，並有堵轉情況存在時，請在減速箱輸出軸和負載連接處加裝扭矩限制裝置，確保齒輪減速箱正常運行。
- The speed is based on the synchronous motor speed reduction ratio as a benchmark calculated by dividing the value of. Actual speed will vary the size of the load changes in less than the values shown in 2~15%.
- Hope to the table of the reduction ratio is greater than the further reduction, it would be installed between the motor and the reducer reduction ratio of 10 the middle of the reducer.
- When the load torque exceeds the maximum allowable load torque gear motor, and a locked rotor situation exists, please slow down box at the junction of the output shaft and load torque limit device installed to ensure the normal operation gearbox.

直角中實減速箱

Right angle solid-shaft reduction gear box

型號:8GU □ RT-K Model:8GU □ RT-K
減速比:1:5~200 Gear ratio:1:5~200

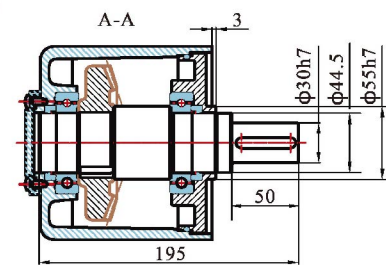


145型 CAD 尺寸

Model 145 CAD size

組合: 定速電機+直角中實減速箱
減速比: 1:5~200

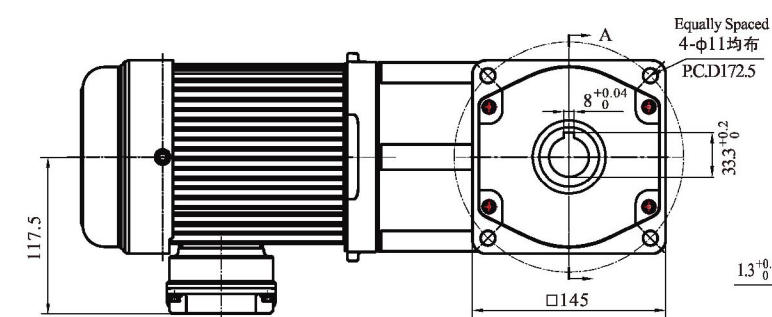
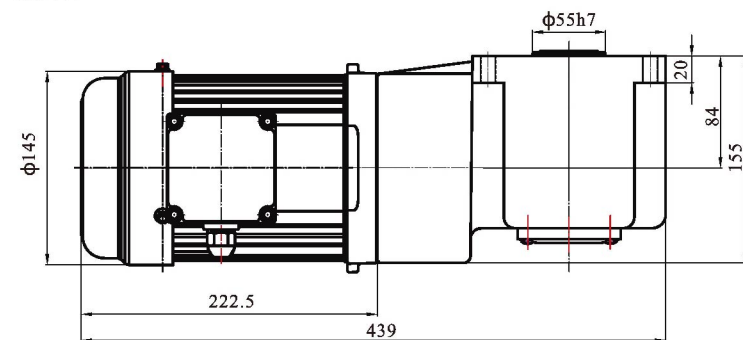
Combination: fixed speed motor + right angle solid reduction gear box
Deceleration ratio: 1:5~200



直角中空減速箱

Right angle hollow-shaft reduction gear box

型號:8GU □ RC-K Model:8GU □ RC-K
減速比:1:5~200 Gear ratio:1:5~200

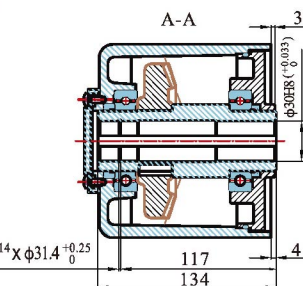


145型 CAD 尺寸

Model 145 CAD size

組合: 定速電機+直角中空減速箱
減速比: 1:5~200

Combination: fixed speed motor + right angle hollow reduction gear box
Deceleration ratio: 1:5~200



750W

□ 145mm



電機特性

List of motor characteristics

電機型號 Motor model	規格 Specs	輸出功率 Output Power W	電源電壓 Voltage V	頻率 Frequency Hz	電流 Current A	起動扭矩 Starting Torque		額定扭矩 Rated Torque		額定轉速 Rated Revolution r/min
						mN.m	gf.cm	mN.m	gf.cm	
8IK750GU-UF	感應 Induction	750	三相 3-phase 380	50	2.15	11900	119000	5400	54000	1420
				60	1.95	9940	99400	4510	45100	1700
8IK750GU-SF	感應 Induction	750	三相 3-phase 220	50	3.72	11900	119000	5400	54000	1420
				60	3.38	9940	99400	4510	45100	1700

- 上表參數是指電機單體，不附加任何負荷裝置。
- 電機額定轉速、額定電流允許在 ±5% 範圍內變動。
- Parameters in above table refer to motor alone, without any load device.
- Permissible change in rated speed and rated current of the motor is within the range of ±5%.

轉直角中實/中空減速箱

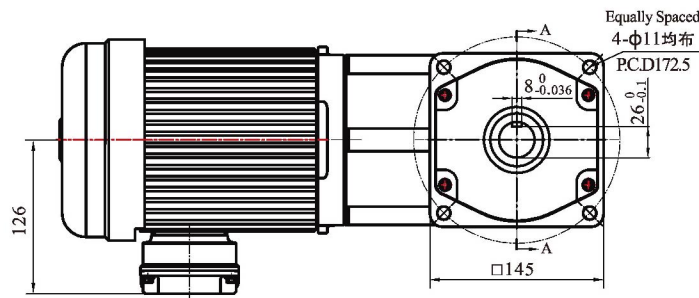
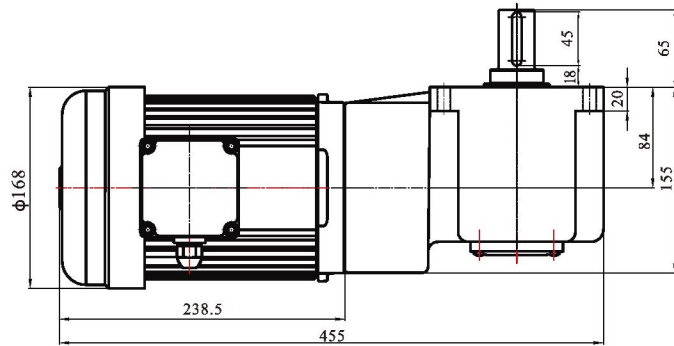
減速比	5	6	7.5	10	12.5	15	20	25	30	36	50	60	75	80	90	100	120	150	180	200
50Hz轉速 r/min	300	250	200	150	120	100	75	60	50	41.7	30	25	20	18.8	16.7	15	12.5	10	8.3	7.5
額定扭矩 N.m	25.7	30.8	38.5	51.3	64.1	77	103	128	154	185	250									

- 轉速是以電動機的同步轉速為基準除以減速比而算出的數值。實際轉速將隨負載大小變化而比所示數值減少2~15%左右。
- 希望以大於上表的減速比進一步減速時，可在電動機與減速機之間安裝減速比為10的中間減速機。
- 當負載扭矩超過減速電機最大允許負載扭矩，並有堵轉情況存在時，請在減速箱輸出軸和負載連接處加裝扭矩限制裝置，確保齒輪減速箱正常運行。
- The speed is based on the synchronous motor speed reduction ratio as a benchmark calculated by dividing the value of of. Actual speed will vary the size of the load changes in less than the values shown in 2~15%.
- Hope to the table of the reduction ratio is greater than the further reduction, it would be installed between the motor and the reducer reduction ratio of 10 the middle of the reducer.
- When the load torque exceeds the maximum allowable load torque gear motor, and a locked rotor situation exists, please slow down box at the junction of the output shaft and load torque limit device installed to ensure the normal operation gearbox.

直角中實減速箱

Right angle solid-shaft reduction gear box

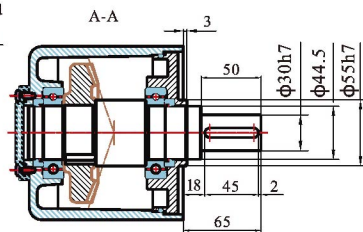
型號:8GU □RT-K Model:8GU □RT-K
速比:1:5~200 Gear ratio:1:5~200



145型 CAD 尺寸 Model 145 CAD size

組合：定速電機+直角中實減速箱
減速比：1:5~200

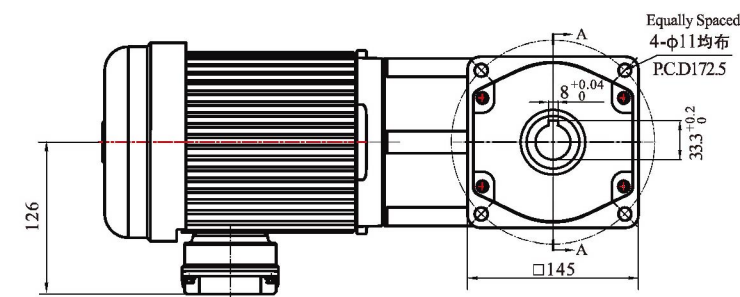
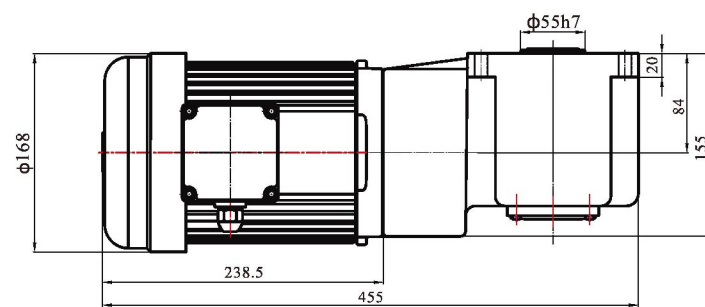
Combination: fixed speed motor + right angle solid reduction gear box
Deceleration ratio: 1:5~200



直角中空減速箱

Right angle hollow-shaft reduction gear box

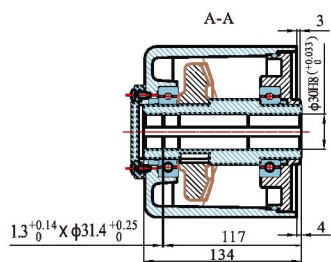
型號:8GU □RC-K Model:8GU □RC-K
減速比:1:5~200 Gear ratio:1:5~200



145型 CAD 尺寸 Model 145 CAD size

組合：定速電機+直角中空減速箱
減速比：1:5~200

Combination: fixed speed motor + right angle hollow reduction gear box
Deceleration ratio: 1:5~200



1500W

145mm



電機特性

List of motor characteristics

電機型號 Motor model	規格 Specs	輸出功率 Output Power W	電源電壓 Voltage V	頻率 Frequency Hz	電流 Current A	起動扭矩 Starting Torque		額定扭矩 Rated Torque		額定轉速 Rated Revolution r/min
						mN.m	gf.cm	mN.m	gf.cm	
8IK1500GU-UF	感應 Induction	1500	三相 3-phase 380	50	3.85	23500	235000	10700	107000	1430
				60	3.35	19800	198000	9000	90000	1700
8IK1500GU-SF	感應 Induction	1500	三相 3-phase 220	50	6.65	23500	235000	10700	107000	1430
				60	5.78	19800	198000	9000	90000	1700

- 上表參數是指電機單體，不附加任何負荷裝置。
- 電機額定轉速、額定電流允許在 ±5% 範圍內變動。
- Parameters in above table refer to motor alone, without any load device.
- Permissible change in rated speed and rated current of the motor is within the range of ±5%.

直角中實/中空減速箱

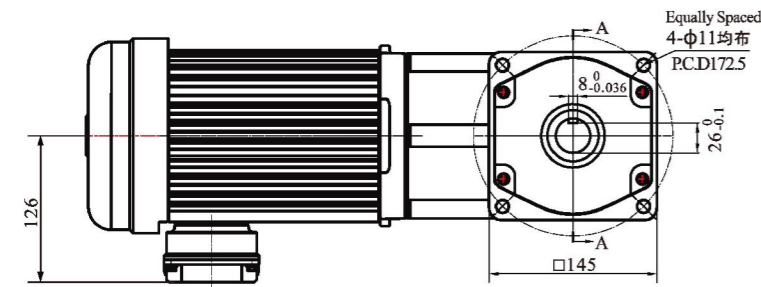
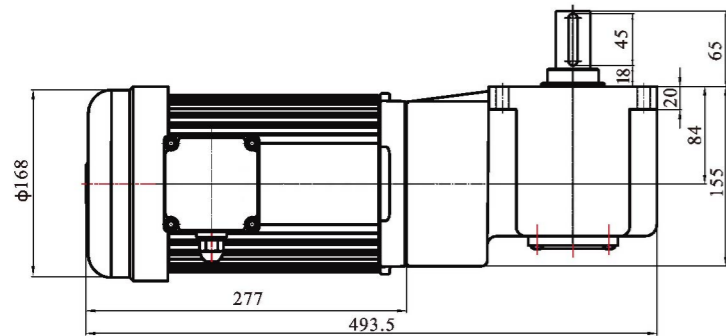
減速比	5	6	7.5	10	12.5	15	20	25	30	36	50	60	75	80	90	100	120	150	180	200
50Hz轉速 r/min	300	250	200	150	120	100	75	60	50	41.7	30	25	20	18.8	16.7	15	12.5	10	8.3	7.5
額定轉矩 N.m	50.8	61	76.2	102	127	152	200	250												

- 轉速是以電動機的同步轉速為基準除以減速比而算出的數值。實際轉速將隨負載大小變化而比所示數值減少2~15%左右。
- 希望以大於上表的減速比進一步減速時，可在電動機與減速機之間安裝減速比為10的中間減速機。
- 當負載扭矩超過減速電機最大允許負載扭矩，並有堵轉情況存在時，請在減速箱輸出軸和負載連接處加裝扭矩限制裝置，確保齒輪減速箱正常運行。
- The speed is based on the synchronous motor speed reduction ratio as a benchmark calculated by dividing the value of. Actual speed will vary the size of the load changes in less than the values shown in 2~15%.
- Hope to the table of the reduction ratio is greater than the further reduction, it would be installed between the motor and the reducer reduction ratio of 10 the middle of the reducer.
- When the load torque exceeds the maximum allowable load torque gear motor, and a locked rotor situation exists, please slow down box at the junction of the output shaft and load torque limit device installed to ensure the normal operation gearbox.

直角中實減速箱

Right angle solid-shaft reduction gear box

型號:8GU □ RT-K Model:8GU □ RT-K
減速比:1:5~200 Gear ratio:1:5~200

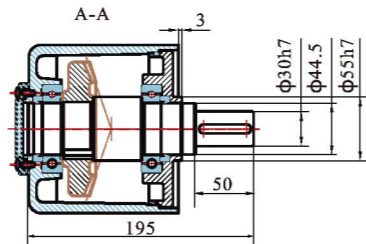


145型 CAD 尺寸

Model 145 CAD size

組合: 定速電機+直角中實減速箱
減速比: 1:5~200

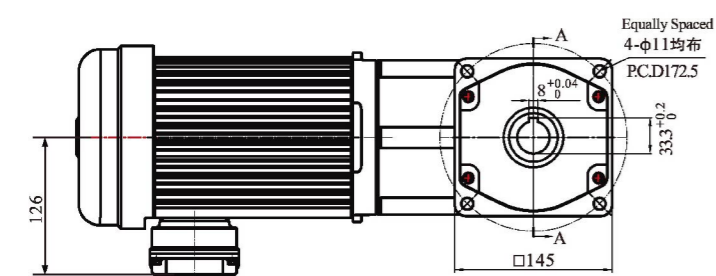
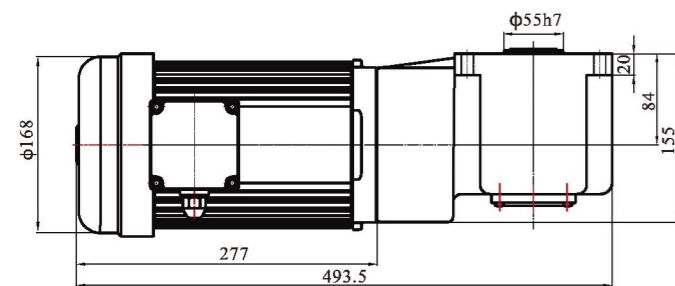
Combination: fixed speed motor + right angle solid reduction gear box
Deceleration ratio: 1:5~200



直角中空減速箱

Right angle hollow-shaft reduction gear box

型號:8GU □ RC-K Model:8GU □ RC-K
減速比:1:5~200 Gear ratio:1:5~200

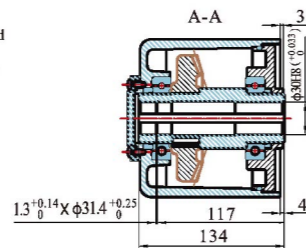


145型 CAD 尺寸

Model 145 CAD size

組合: 定速電機+直角中空減速箱
減速比: 1:5~200

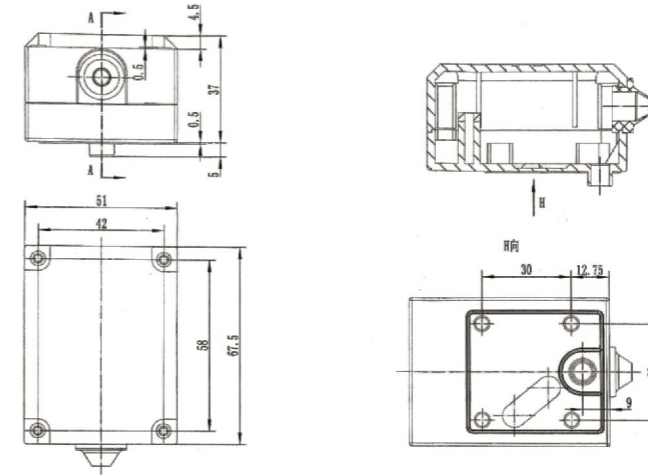
Combination: fixed speed motor + right angle hollow reduction gear box
Deceleration ratio: 1:5~200



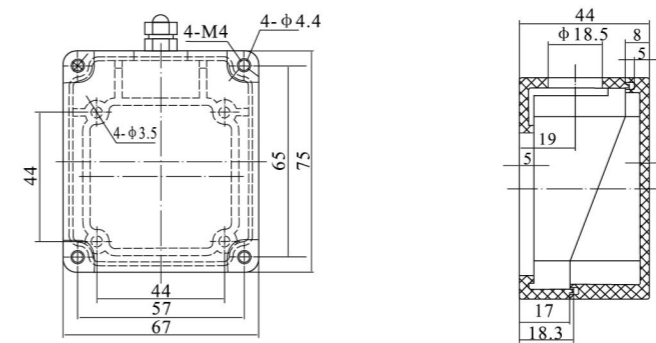
接線盒種類

Type of junction box

T1:ML接線盒 T1:ML junction box



T2: SX型接線盒 T2: SX type junction box



T3: 防水接線盒 T3: Waterproof junction box

